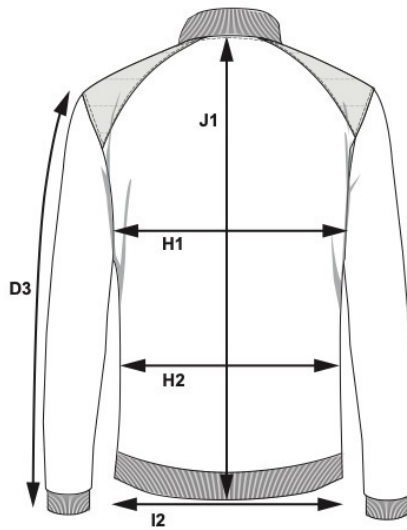
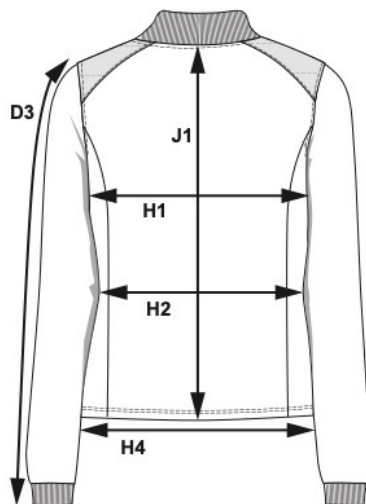


SIZE AND FIT: CRESCENT



CRESCENT *Men*

Base size: M / Measurement (in cm)	Diagram	S	M	L	XL	XXL	3XL	4XL
SLEEVE LENGTH - include the Rib at bottom sleeve	D3	61,75	63,5	65,25	67	68,75	70,5	70,5
CHEST WIDTH at armhole	H1	53	56	59	62	65	68	71
WAIST	H2	49	52	55	58	61	64	67
WIDTH OF BOTTOM RIB	H4	46	49	52	55	58	61	64
FULL LENGTH at centre back	J1	64	66	68	70	72	74	74



CRESCENT *Women*

Base size: M / Measurement (in cm)	Diagram	XS	S	M	L	XL	2XL	3XL
SLEEVE LENGTH - from shoulder seam	D3	61	62	63	64	65	66	66
CHEST WIDTH at armhole	H1	46	48	51	54	57	60	63
WAIST	H2	43	45	48	51	54	58	62
BOTTOM WIDTH	H4	46,5	48,5	51,5	54,5	57,5	60,5	63,5
FULL LENGTH at centre back	J1	53,5	55,5	57,5	59,5	61,5	63,5	63,5



SIZE GUIDE

WOMEN

CM

	EN / UK / US XS / 8 / 4	EN / UK / US S / 10 / 6	EN / UK / US M / 12 / 8	EN / UK / US L / 14 / 10	EN / UK / US XL / 16 / 12	EN / UK / US 2XL / 18 / 14	EN / UK / US 3XL / 20 / 16
CHEST	75-80	81-86	87-92	93-98	99-104	105-111	112-118
WAIST	59-64	65-70	71-76	77-82	83-88	89-95	96-103
HIP	83-88	89-94	96-101	102-107	108-113	114-120	121-127

MEN

CM

	EN / UK + US S	EN / UK + US M	EN / UK + US L	EN / UK + US XL	EN / UK + US 2XL	EN / UK + US 3XL	EN / UK + US 4XL
NECK	37/38	39/40	41/42	43/44	45/46	47/48	49/50
CHEST	90-95	96-101	102-107	108-113	114-119	120-125	126-131
WAIST	76-81	82-87	88-93	94-99	100-105	106-111	112-117
HIP	92-97	98-103	104-109	110-115	116-121	122-127	128-133

HOW TO MEASURE

