

PR238 Men's Cotton Rich Oxford Stripes Shirt

Description

A welcome addition to our range of Signature Oxford Shirts, this style is designed with narrow vertical stripes for a touch of high street inspiration. As you'd expect, this iconic style features the classic button-down collar with double buttons to the cuff. Choose to wear more casually with an open collar and roll-back sleeves and a flash of contrast fabric becomes visible on the inner neckband and inside cuff.

Product Features:

- Classic button-down collar
- Contrast coloured inner neckband and cuff
- Two button cuff and single button sleeve guard
- Curved hem

Available In:

S, M, L, XL, 2XL, 3XL

Certifications:

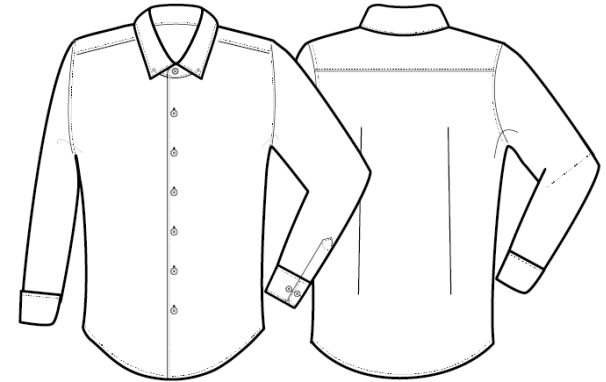


Colours:

| Colour | Pantone | C | M | Y | K |
|-------------------|-------------|-------|----|----|----|
| Oxford Blue | 7451c | 46 | 23 | 0 | 0 |
| White/Grey | White | White | 0 | 0 | 0 |
| | Grey | 424c | 30 | 20 | 19 |
| White/Oxford Blue | White | White | 0 | 0 | 0 |
| | Oxford Blue | 7451c | 46 | 23 | 0 |
| White/Pink | White | White | 0 | 0 | 0 |
| | Pink | 671c | 3 | 28 | 0 |

Fabric:

60% Cotton, 40% Polyester Oxford Stripe, 135gsm.



Suggested Decoration:

Screen Print, Transfer Print, Embroidery

Country of Origin:

Bangladesh

Commodity Code:

6205200090

Features:



Wash Care:



Carton Information:

| Sizes | Carton | Pack | SKU's | Carton Weight | Carton Dimensions |
|-----------|--------|------|-------|---------------|--------------------|
| All Sizes | 24 | 6 | 24 | 9.5kg approx. | 56cm x 36cm x 54cm |

Garment Sizes:

| Call size | S | M | L | XL | 2XL | 3XL |
|-----------------|-----|-----|-----|-----|-----|-----|
| Collar cm | 39 | 41 | 43 | 45 | 47 | 49 |
| Chest to fit" | 34 | 38 | 42 | 46 | 50 | 54 |
| Chest to fit cm | 87 | 96 | 107 | 117 | 126 | 136 |
| Chest actual cm | 104 | 114 | 124 | 134 | 144 | 154 |
| Back length cm | 79 | 80 | 80 | 81 | 81 | 82 |