

## PR309 Women's Poplin Supreme Short Sleeve Shirt

### Description

A women's short sleeve Supreme Poplin Shirt which comes in a heavy weight material for improved appearance. Soft collar detail, bust and back darts give this blouse a semi-fitted appearance.

### Product Features:

- Heavier weight Poplin fabric
- Soft collar styling
- Rounded bottom hem

### Available In:

8, 10, 12, 14, 16, 18, 20, 22, 24, 26

### Certifications:

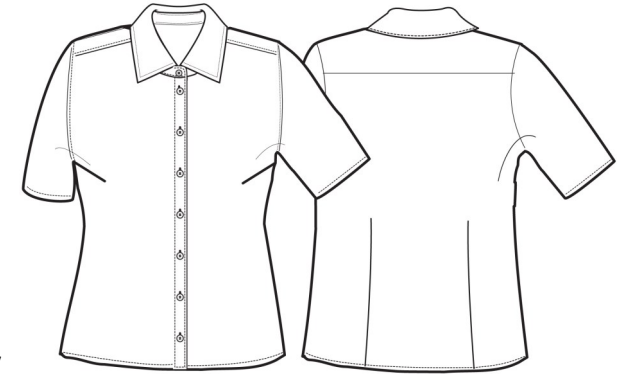


### Colours:

Colour	Pantone	C	M	Y	K
Black	Black c	0	0	0	100
White	White	0	0	0	0

### Fabric:

65% Polyester, 35% Cotton Poplin, 125gsm.



### Suggested Decoration:

Screen Print, Transfer Print, Embroidery

### Country of Origin:

Bangladesh

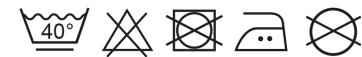
### Commodity Code:

6206400000

### Features:



### Wash Care:



### Carton Information:

Sizes	Carton	Pack	SKU's	Carton Weight	Carton Dimensions
8 - 20	24	6	14	7.4kg approx.	57cm x 36cm x 39cm
22 - 26	12	3	6	3.7kg approx.	57cm x 36cm x 19cm

### Garment Sizes:

Size	8	10	12	14	16	18	20	22	24	26
Bust to fit"	33	35	37	39	41	43	45	47	49	51
Bust to fit cm	84	89	94	99	104	109	114	119	124	129
Bust actual cm	96	101	106	111	116	121	126	131	136	141
Call size	XS	S	M	L	XL	2XL	3XL	4XL	5XL	6XL
Back length cm	66	66.5	67	67.5	68	68.5	69	69.5	70	70.5