

## PR336 Women's Short Sleeve Signature Oxford Blouse

### Description

Premier's short sleeve Signature Oxford blouse comes in a cotton rich Oxford weave fabric. This blouse offers a semi-fitted styling for the wearer with bust darts, a rounded bottom hem and soft collar detail.

### Product Features:

- Soft collar styling
- Semi-fitted styling with bust darts
- Rounded bottom hem

### Available In:

8, 10, 12, 14, 16, 18, 20, 22, 24, 26

### Certifications:

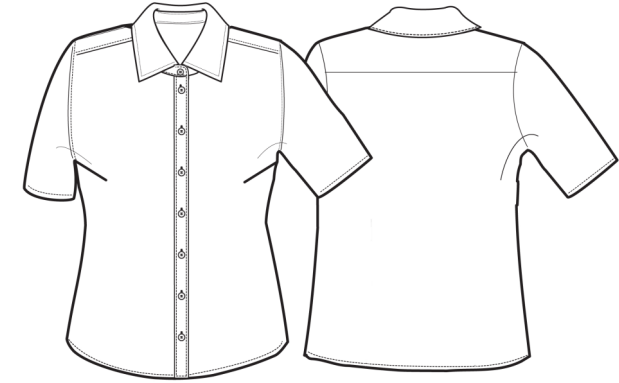


### Colours:

Colour	Pantone	C	M	Y	K
Black	Black c	0	0	0	100
Light Blue	658c	37	11	0	0
White	White	0	0	0	0

### Fabric:

70% Cotton, 30% Polyester Oxford Weave, 135gsm.



### Suggested Decoration:

Screen Print, Transfer Print, Embroidery

### Country of Origin:

Bangladesh

### Commodity Code:

6206300090

### Features:



### Wash Care:



### Carton Information:

Sizes	Carton	Pack	SKU's	Carton Weight	Carton Dimensions
8 - 20	24	6	21	6.7kg approx	56cm x 36cm x 15cm
22 - 26	12	3	9	3kg	36cm x 28cm x 15cm

### Garment Sizes:

Size	8	10	12	14	16	18	20	22	24	26
<b>Bust to fit"</b>	33	35	37	39	41	43	45	47	49	51
<b>Bust to fit cm</b>	84	89	94	99	104	109	114	119	124	129
<b>Bust actual cm</b>	92	97	102	107	112	117	122	129	134	139
<b>Call size</b>	XS	S	M	L	XL	2XL	3XL	4XL	5XL	6XL
<b>Back length cm</b>	66	66.5	67	67.5	68	68.5	69	69.5	70	70.5