

## PR344 Women's Stretch-Fit Cotton Poplin Long Sleeve Shirt

### Description

Cotton combined with Elastane makes for a soft, stretchy and comfortable fitted Poplin shirt for ladies. Double buttons on the cuff, together with a single button sleeve guard allows for a either a formal arm or a more casual roll back option. Styled with a soft cut-away collar with top button- which again, can be worn formally with a scarf or open collared for a more relaxed look.

### Product Features:

- Soft feel and stretch fabric
- Bust and back darts
- Seamless placket
- Curved hem
- Two button adjustable cuff

### Available In:

XS, S, M, L, XL, 2XL, 3XL

### Certifications:

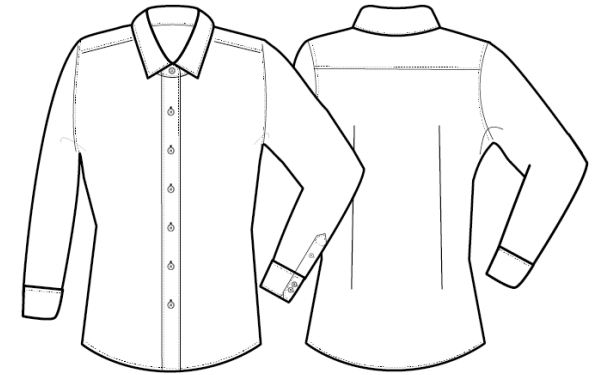


### Colours:

| Colour    | Pantone      | C  | M  | Y  | K   |
|-----------|--------------|----|----|----|-----|
| Black     | Black c      | 0  | 0  | 0  | 100 |
| Silver    | Cool Grey 7c | 20 | 14 | 12 | 40  |
| White     | White        | 0  | 0  | 0  | 0   |
| Pale Blue | 2717C        | 34 | 15 | 0  | 0   |

### Fabric:

97% Cotton, 3% Elastane Poplin, 115gsm.



### Suggested Decoration:

Screen Print, Transfer Print, Embroidery

### Country of Origin:

Bangladesh

### Commodity Code:

6206300090

### Features:



### Wash Care:



### Carton Information:

| Sizes     | Carton | Pack | SKU's | Carton Weight | Carton Dimensions  |
|-----------|--------|------|-------|---------------|--------------------|
| All sizes | 24     | 6    | 28    | 7.5kg approx. | 56cm x 38cm x 16cm |

### Garment Sizes:

| Size           | 8  | 10 | 12  | 14  | 16  | 18  | 20  |
|----------------|----|----|-----|-----|-----|-----|-----|
| Bust to fit"   | 33 | 35 | 37  | 39  | 41  | 43  | 45  |
| Bust to fit cm | 84 | 89 | 94  | 99  | 104 | 109 | 114 |
| Bust actual cm | 93 | 98 | 103 | 108 | 113 | 118 | 124 |
| Call size      | XS | S  | M   | L   | XL  | 2XL | 3XL |
| Back length cm | 65 | 66 | 67  | 68  | 69  | 70  | 71  |