

PR623 Women's Lined Polyester Waistcoat

Description

This ladies’ waistcoat comes with a four button fastening down the front with two functional watch pockets to the sides. Fully lined and with a satin-feel back, this waistcoat features a buckle so the wearer can adjust the fit.

Product Features:

- Satin-feel back with adjuster
- Two functional watch pockets
- Four button fastening
- Fully lined

Available In:

2XS, XS, S, M, L, XL, 2XL

Certifications:

SedexMember

OEKO
TEX®

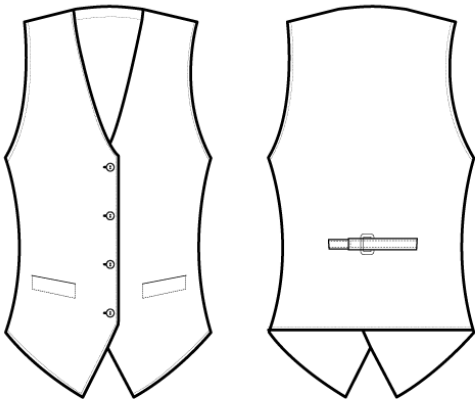
STANDARD
100
11-55731
Shirley

Colours:

Colour	Pantone	C	M	Y	K
Black	Black c	0	0	0	100

Fabric:

100% Polyester Plain Weave, 185gsm.



Suggested Decoration:

Screen Print, Transfer Print, Embroidery

Country of Origin:

China

Commodity Code:

6211431000

Features:



Wash Care:



Carton Information:

Sizes	Carton	Pack	SKU's	Carton Weight	Carton Dimensions
All Sizes	24	6	7	10kg approx.	60cmx40cmx22cm

Garment Sizes:

Call size	2XS	XS	S	M	L	XL	2XL
Bust to fit"	27	29	32	34	37	40	44
Bust to fit cm	68	72	80	86	94	101	112
Bust actual cm	72	80	88	96	104	112	120
Back length cm	55	55	55	55	55	55	55