

PR901 'Essential' Long Sleeve Chef's Jacket

Description

A durable long sleeve chef's jacket that fastens down the right hand side of the body with five long life resin buttons. On the upper left sleeve there is a handy double pocket pen compartment. This jacket is styled with a mandarin collar and is available in Black and White and offers great value for money.

Product Features:

- Five button wrap over fastening
- Long life resin buttons
- Double pen pocket
- Mandarin collar

Available In:

XS, S, M, L, XL, 2XL, 3XL, 4XL

Certifications:

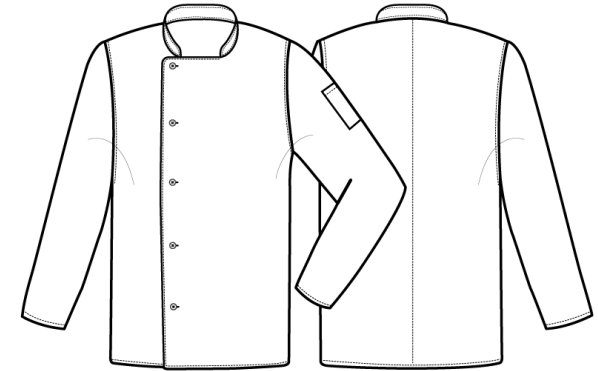


Colours:

| Colour | Pantone | C | M | Y | K |
|--------|---------|---|---|---|-----|
| Black | Black c | 0 | 0 | 0 | 100 |
| White | White | 0 | 0 | 0 | 0 |

Fabric:

65% Polyester, 35% Cotton Twill, 170gsm.



Suggested Decoration:

Screen Print, Transfer Print, Embroidery

Country of Origin:

Bangladesh

Commodity Code:

6211331000

Features:



Wash Care:



Carton Information:

| Sizes | Carton | Pack | SKU's | Carton Weight | Carton Dimensions |
|-----------|--------|------|-------|---------------|--------------------|
| All Sizes | 24 | 6 | 16 | 10kg approx | 60cm x 40cm x 20cm |

Garment Sizes:

| Call size | XS | S | M | L | XL | 2XL | 3XL | 4XL |
|-----------------|----|-----|-----|-----|-----|-----|-----|-----|
| Chest to fit" | 30 | 34 | 38 | 42 | 46 | 50 | 54 | 58 |
| Chest to fit cm | 77 | 87 | 96 | 107 | 117 | 126 | 136 | 146 |
| Chest actual cm | 96 | 104 | 112 | 120 | 128 | 136 | 144 | 152 |
| Back length cm | 76 | 76 | 76 | 76 | 76 | 76 | 76 | 76 |