

# Explore **STORMTECH** Polos & Layering

Elevate  
Your Next  
Adventure





**STORMTECH®**

## Fashion for Every Forecast

---

Elevate life's next adventure. In an industry that typically offers fast fashion as a solution for corporate apparel, STORMTECH is a disruptor. Given a choice, most consumers will choose higher quality, performance driven products that are built to last, and which they are proud to wear both at work and at play. Crafted with the latest technological advances, our Spring 2025 collection provides a seamless transition from lightweight layering to our H2XTREME® technical shells and fully insulated Thermolex outerwear to enhance your experience during those cool spring days.

Inspired by the rugged landscapes of the Pacific Northwest and refined in Vancouver's cool, urban cityscape, STORMTECH Performance Apparel has outfitted explorers and seekers for extreme, unpredictable weather and conditions since 1977. Fueled by our passion for the outdoors, we build durable, functional, contemporary clothing and deliver quality and innovation year after year.

At STORMTECH, we believe in environmental stewardship, with technologies that lessen our impact on our natural environment. STORMTECH creates timeless, high-quality products designed to extend product life and reduce environmental impact. We back up our commitment to quality workmanship with a 5-year warranty, and have built out a sustainable product care program to extend product life and performance.

Sustainable practices are ever-evolving, and we are committed to reducing our environmental impact and enhancing sustainable practices through responsible design, sourcing, and daily business operations. We also support youth through our 1:1 initiative, and support worker health and safety at all of our factories and office locations.

STORMTECH is a one-stop, full-service partner uniquely structured for the corporate marketplace, offering a comprehensive array of in-house decoration services, a robust e-commerce website and a highly-skilled customer service team to support and fulfill your orders.

Visit us online at [www.stormtechperformance.com](http://www.stormtechperformance.com) or connect on social media.

STORMTECH® Performance Apparel





# What makes Stormtech different?

1

## 5 YEAR GUARANTEE

At Stormtech, we design products to last. Our commitment to timeless style and exceptional quality ensures that our garments withstand the test of time. We use premium materials and rigorous testing to guarantee durability and performance. Every item undergoes extensive lab testing, wear testing, and product safety evaluations. Backed by a five-year warranty, our products reflect our dedication to exceptional workmanship and durability.

4

## PERFORMANCE-ENHANCING FINISHES

To achieve long-lasting quality, we incorporate specialized finishes including H2X-DRY® and Polygiene designed to extend the life and enhance the performance of the garment. These finishes include treatments that improve wrinkle resistance, moisture-wicking capabilities and contribute to the longevity and wear resistance of our Polo, Tee and Layering Collection.

2

## HIGH-QUALITY YARNS

Our commitment to excellence begins with the careful selection of raw materials. Our Premium Tees and Polos use yarns crafted from the finest long-staple cotton fibers produced from select cotton sources. High quality polyester yarns are used to achieve extended durability and performance enhancing features such as moisture-wicking resistant. These superior yarns result in a smoother, softer texture, providing a luxurious feel against the skin.

5

## SUSTAINABLE SOURCED

Unlike some industry competitors, we ensure that the cotton fibers used in our Premium Tees and polos are not sourced from non-compliant production sources including the Xinjiang region of China. Ethically sourced BCI (Better Cotton Initiative) cotton is considered better quality but more expensive than regular cotton due to the higher costs involved in sustainable farming practices, ethical and social standards, reduced environmental impact, certification costs.

3

## ALL INCLUSIVE FIT

At Stormtech, we are committed to ensuring that all consumers feel good in the products they purchase and embrace the differences of fit while maintaining a consistent appearance for corporate applications. We offer a full range of sizing options from M's XS-6XL and W's XS-2XL. Some consumers like their apparel to be loose fitting and some prefer a more fitted or athletic look. All Stormtech polos and tees look good whether they are worn untucked or tucked in. An expanded size offering in styles that both look great and feel great is an essential part of the products we develop at Stormtech and is what all-inclusive sizing is all about.

6

## ANTI-SNAG/LOW PILL DURABILITY

Our fabric mills use knitting techniques that go beyond conventional methods to ensure quality resistance to pilling and snagging. Combed cotton and vortex yarn minimize pilling, hairiness, consistent yarn thickness and provides enhanced durability. Tight precision knit capabilities that minimize vulnerabilities, resulting in polos and tees that maintain their original appearance over extended wear. From yarn selection and fabric finishing to the final finishing touches, our quality control processes are designed to meet the high industry standards and ensure that every garment leaving our facility is of the utmost quality.



# Explore Our Cotton Polo Collection

## Premium Cotton Comfort

The Sonora H2X-DRY® Moisture Management polo combines maximum performance with high-style design. Artfully crafted features such as articulated action shoulders, a self-fabric collar and a classic button-down placket take looking great to new heights. Made with Certified Cotton and GRS-Certified Polyester for superior softness, durable Recycled Polyester to help maintain shape and transport moisture away from the skin with spandex for added stretch and recovery. UPF rating of 40+ protects the skin from the sun's rays.



# Sonora

## Premium Cotton Comfort

SONORA H2X-DRY® S/S POLO PSX-7M

### Anti-Curl Collar with Collar Stays (M's)

Helps maintain collar shape and structure, even after washing

### STORMTECH H2X-DRY® Moisture Management

Allows perspiration to escape from the body, helping to maintain optimal body temperature and comfort

### Classic 3-Button Placket (M's)

Classic polo styling that is easy to wear and easy to style

### 4-Way Stretch Fabric

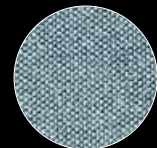
Provides extra comfort and an unrestricted range of movement

### UPF Rating 40+

Protects the skin from the sun's rays

### Hem Side Slits

Adds styling detail, comfort and ease of movement at hem



### Snag Resistant Fabric

Improves the snag resistance of the fabric, and leaves the garment looking new wear after wear

**H2XDRY**  
MOISTURE MANAGEMENT

  
**active stretch**

**UVX**  
SUN PROTECTION

 Responsibly  
Produced Cotton

  
**anti-snap**  
CONSTRUCTION

# Ferrera

## Premium Cotton Comfort

### FERRERA S/S POLO

PSX-2W

The Ferrara Polo is made from 94% Certified Cotton pique for superior softness and comfort with 6% Spandex to provide stretch and shape retention. UPF 50+ rated. Snag-resistant fabric improves durability and leaves the garment looking new wear after wear.



active stretch

Provides extra comfort and an unrestricted range of movement

**H2XDRY**  
MOISTURE MANAGEMENT

Allows perspiration to escape from the body, helping to maintain optimal body temperature and comfort



anti-snap  
CONSTRUCTION

Improves the snag resistance of the fabric, and leaves the garment looking new wear after wear

**UVX**  
SUN PROTECTION

UPF Rating 50+  
Technology that protects the skin from the sun's rays





# FERRERA S/S POLO

PSX-2M | PSX-2W



**Classic 3-Button Placket (M's)**  
For classic polo styling

**Taped Neck Seam**  
For long-lasting shape retention

**STORMTECH H2X-DRY® Moisture Management**  
Allows perspiration to escape from the body, helping to maintain optimal body temperature and comfort

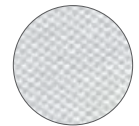
**Classic 4-Button Placket (W's)**  
For classic polo styling

**Rib Knit Collar and Sleeve Cuff**  
Engineered rib knit construction provides enhanced durability and comfort

**4-Way Stretch HD Fabric**  
Provides extra comfort and an unrestricted range of movement

**UPF Rating 50+**  
Protects the skin from the sun's rays

**Hem Side Slits**  
Adds styling detail, comfort and ease of movement at hem



**Snag Resistant Fabric**  
Improves the snag resistance of the fabric, and leaves the garment looking new wear after wear



RECYCLED  
CONTENT



RESPONSIBLY  
PRODUCED  
COTTON



ACTIVE  
STRETCH



ANTI-SNAG

**Fabrication** 94% Cotton/6% Spandex Pique

**Weight** 6.78 oz/yd<sup>2</sup> / 230gsm

**Technical Features**

**H2XDRY**  
MOISTURE MANAGEMENT

**UVX**  
SUN PROTECTION

**Men's Sizes** S-3XL (Black, Dolphin S-5XL)

**Women's Sizes** XS-2XL (Black, Dolphin XS-3XL)

**Decoration Options**



M's & W's: Black



M's & W's: Dolphin



M's & W's: Navy



M's & W's: White

# Oasis

## Premium Cotton Comfort

### OASIS S/S POLO

PSX-3M

The Oasis H2X-DRY® Moisture Management polo combines maximum performance with high-style design. Artfully crafted features with articulated action shoulders, a self-fabric collar and a classic button down placket take looking great to new heights. Made from Certified Cotton for superior softness with GRS-Certified Polyester to help maintain shape and transport moisture away from the skin. UPF rating of 50+ protects the skin from the sun's rays.



**anti-snag**  
CONSTRUCTION

Improves the snag resistance of the fabric, and leaves the garment looking new wear after wear



**POLYGIENE**  
FRESHNESS

Prevents the growth of odor causing bacteria. Wear more, wash less.

**H2XDRY**  
MOISTURE MANAGEMENT

Allows perspiration to escape from the body, helping to maintain optimal body temperature and comfort

**UVX**  
SUN PROTECTION

**UPF Rating 50+**  
Technology that protects the skin from the sun's rays



# OASIS S/S POLO

PSX-3M | PSX-3W



**Anti-Curl Collar with Collar Stays (M's)**  
Helps maintain collar shape and structure, even after washing

**Classic 3-Button Placket (M's)**  
For classic polo styling

**STORMTECH H2X-DRY® Moisture Management**  
Allows perspiration to escape from the body, helping to maintain optimal body temperature and comfort

**Polygiene® Freshness Technology**  
Prevents the growth of odor causing bacteria. Wear more, wash less.

**UPF Rating 50+**  
Protects the skin from the sun's rays

**Articulated Action Shoulders**  
Provide optimal range of motion



**Snag Resistant Fabric**  
Improves the snag resistance of the fabric, and leaves the garment looking new wear after wear

**Contoured Seaming (W's)**  
Provides a closer to body fit and sleek silhouette

**Mechanical Stretch**  
Provides added comfort, flexibility and shape retention

**Hem Side Slits**  
Adds styling detail, comfort and ease of movement at hem



RECYCLED CONTENT



RESPONSIBLY PRODUCED COTTON



ACTIVE STRETCH



ANTI-SNAG

## Additional Features

- Open-V 2-Button Placket (W's)
- Anti-Curl Combination Collar with Collar Stays (W's)

## Fabrication

55% Cotton/40% Recycled Polyester/  
5% Spandex Single Jersey

## Weight

Lightweight – 4.72 oz/yd<sup>2</sup> / 160gsm

## Men's Sizes

S-3XL (Black, Dolphin, Ice Blue S-5XL)

## Women's Sizes

XS-2XL (Black, Dolphin, Ice Blue XS-3XL)

## Technical Features

**H2XDRY**  
MOISTURE MANAGEMENT

**UVX**  
SUN PROTECTION

**POLYGIENE**  
FRESHNESS

## Decoration Options



M's & W's: Black



M's & W's: Dolphin



M's & W's: Navy



M's & W's: Ice Blue



M's & W's: Sage Green



M's & W's: Rust



M's & W's: White

# Sonora

---

## Premium Cotton Comfort



### Sonora H2X-DRY® S/S Polo

PSX-7M | PSX-7W

The Sonora H2X-DRY® Moisture Management polo combines maximum performance with high-style design. Artfully crafted features such as articulated action shoulders, a self-fabric collar and a classic button-down placket take looking great to new heights. Made with Certified Cotton and GRS-Certified Polyester for superior softness, durable Recycled Polyester to help maintain shape and transport moisture away from the skin with spandex for added stretch and recovery. UPF rating of 40+ protects the skin from the sun's rays.



# SONORA H2X-DRY® S/S POLO

PSX-7M | PSX-7W



**Anti-Curl Collar with Collar Stays (M's)**  
Helps maintain collar shape and structure, even after washing

**Classic 3-Button Placket (M's)**  
Classic polo styling that is easy to wear and easy to style

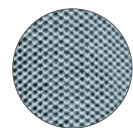
**STORMTECH H2X-DRY® Moisture Management**  
Allows perspiration to escape from the body, helping to maintain optimal body temperature and comfort

**Hem Side Slits**  
Adds fashion detail, comfort and ease of movement at hem

**Open-V 2-Button Placket (W's)**  
Provides modern, premium styling, flexibility, and comfort

**UPF Rating 40+**  
Protects the skin from the sun's rays

**Contoured Seaming (W's)**  
Provides a closer to body fit and sleek silhouette



**4-Way Stretch Fabric**  
Provides extra comfort and an unrestricted range of movement



RECYCLED  
CONTENT



RESPONSIBLY  
PRODUCED  
COTTON



ACTIVE  
STRETCH



ANTI-SNAG

**Fabrication** 53% Cotton/ 43% Recycled Polyester/  
4% Spandex Pique

**Weight** Lightweight – 4.72 oz/yd<sup>2</sup> / 160gsm

**Technical  
Features**

**H2XDRY**  
MOISTURE MANAGEMENT

**UVX**  
SUN PROTECTION

**Men's Sizes** S-3XL (Black, Navy, Ash S-5XL)

**Women's Sizes** XS-2XL (Black, Navy, Ash XS-3XL)

**Decoration  
Options**



M's & W's: Black



M's & W's: Navy



M's & W's: Retro Blue



M's & W's: Ash

# Sonora

---

## Premium Cotton Comfort



### Sonora S/S Knit Shirt

CKN-1M

The Sonora S/S Knit Shirt combines maximum performance with high-style design. Artfully crafted features with a self-fabric collar and a classic full button-down placket take looking great to new heights. Made from Certified Cotton for superior softness with GRS-Certified Polyester to help maintain shape and transport moisture away from the skin with spandex for added stretch and recovery. UPF rating of 50+ protects the skin from the sun's rays.

# SONORA S/S KNIT SHIRT

CKN-1M

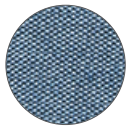


**Collar Stand**  
Maintains collar shape and structure, even after washing

**Button Down Collar**  
Secures the collar tips in place to help maintain its shape

**STORMTECH H2X-DRY® Moisture Management**  
Allows perspiration to escape from the body, helping to maintain optimal body temperature and comfort

**Single Chest Pocket**  
Conveniently stow and access personal items



**4-Way Stretch Fabric**  
Provides extra comfort and an unrestricted range of movement

**UPF Rating 50+**  
Protects the skin from the sun's rays

**Contoured Hem**  
Ergonomic design that provides freedom of movement with a fashionably tailored fit



RECYCLED  
CONTENT



RESPONSIBLY  
PRODUCED  
COTTON



ACTIVE  
STRETCH



ANTI-SNAG

**Fabrication** 51% Cotton/ 46% Recycled Polyester/  
3% Spandex Pique

**Men's Sizes** S-3XL (Black S-5XL)

**Weight** 6.19 oz/yd<sup>2</sup> / 210gsm

**Decoration Options**



**Technical Features**

**H2XDRY**  
MOISTURE MANAGEMENT

**UVX**  
SUN PROTECTION



Black



Navy



Retro Blue



Ash

# Nantucket

## Premium Cotton Comfort

### NANTUCKET STRETCH PIQUE POLO

CTP-2

Hardwearing stretch pique construction 95% Cotton/5% Spandex, button placket polo. Side slits at the hem provide a regular fit, while the pill resistant fabric leaves the garment looking newer for longer.



active stretch

Provides extreme durability with snag and pill resistance

**H2XDRY**  
MOISTURE MANAGEMENT

Allows perspiration to escape from the body, helping to maintain optimal body temperature and comfort



anti-snap  
CONSTRUCTION

Improves the snag resistance of the fabric, and leaves the garment looking new wear after wear

**UVX**  
SUN PROTECTION

**UPF Rating 50+**  
Technology that protects the skin from the sun's rays



# NANTUCKET STRETCH PIQUE POLO

CTP-2 | CTP-2W



**Classic 3-Button Placket (M's)**  
For classic polo styling

**STORMTECH H2X-DRY® Moisture Management**  
Allows perspiration to escape from the body, helping to maintain optimal body temperature and comfort

**4-Way Stretch HD Fabric**  
Provides extreme durability with snag and pill resistance

**UPF Rating 50+**  
Protects the skin from the sun's rays

**Hem Side Slits**  
Adds styling detail, comfort and ease of movement at hem

**Taped Neck Seam**  
For long-lasting shape retention

**Classic 5-Button Placket (W's)**  
For classic polo styling

**Rib Knit Collar and Sleeve Cuff**  
Engineered rib knit construction provides enhanced durability and comfort



**Snag Resistant Fabric**  
Improves the snag resistance of the fabric, and leaves the garment looking new wear after wear



**Fabrication** (Solid) 95% Cotton/ 5% Spandex  
(Charcoal Heather) 57% Cotton/ 38% Polyester/ 5% Spandex

**Weight** 6.19 oz/yd<sup>2</sup> / 210gsm

**Technical Features**

**H2XDRY**  
MOISTURE MANAGEMENT

**UVX**  
SUN PROTECTION

**Men's Sizes** S-3XL (Black S-5XL)

**Women's Sizes** XS-2XL (Black XS-3XL)

**Decoration Options**



M's & W's: Black



M's & W's: Charcoal Heather



M's & W's: Indigo



M's & W's: White

# Nevada

## Premium Cotton Comfort

### NEVADA S/S MICRO PIQUE POLO

PSX-6M

The Nevada Polo is made from 100% responsibly produced Certified Cotton pique for superior softness and comfort. UPF 30+ rated pique fabrication improves durability and leaves the garment looking fresh wear after wear. Self-fabric collar with collar stays to maintain shape, even after washing.



**anti-snag**  
CONSTRUCTION

Improves the snag resistance of the fabric, and leaves the garment looking new wear after wear

#### Classic 3-Button Placket (M's)

Classic polo styling that is easy to wear and easy to style

**UVX**  
SUN PROTECTION

#### UPF Rating 30+

Technology that protects the skin from the sun's rays



# NEVADA S/S MICRO PIQUE POLO

PSX-6M | PSX-6W



## Anti-Curl Collar with Collar Stays (M's)

Helps maintain collar shape and structure, even after washing

## Classic 3-Button Placket (M's)

Classic polo styling that is easy to wear and easy to style

## UPF Rating 30+

Protects the skin from the sun's rays

## Mechanical Stretch

Provides added comfort, flexibility and shape retention

## Hem Side Slits

Adds fashion detail, comfort and ease of movement at hem

## Anti-Curl Combination Collar with Collar Stays (W's)

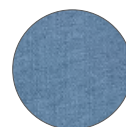
Helps maintain collar shape and structure, even after washing

## Open-V 2-Button Placket (W's)

Provides modern, premium styling, flexibility, and comfort

## Contoured Seaming (W's)

Provides a closer to body fit and sleek silhouette



## Snag Resistant Fabric

Improves the snag resistance of the fabric, and leaves the garment looking new wear after wear



**Fabrication** 100% Cotton Pique

**Weight** Lightweight – 5.01 oz/yd<sup>2</sup> / 170gsm

**Technical Features** **UVX**  
SUN PROTECTION

**Men's Sizes** S-3XL (Black, Midnight, Granite S-5XL)

**Women's Sizes** XS-2XL (Black, Midnight, Granite XS-3XL)

**Decoration Options**



M's & W's: Black



M's & W's: Granite



M's & W's: Midnight



M's & W's: Retro Blue



M's & W's: Storm Grey



# Nevada

---

## Premium Cotton Comfort

### Nevada L/S Micro Pique Polo

PLX-1M | PLX-1W

The Nevada L/S Micro Pique Polo is made from 100% Certified Cotton for superior softness and comfort. Self-fabric collar with collar stays help keep this collar under control and in shape, even after washing.





# NEVADA L/S MICRO PIQUE POLO

PLX-1M | PLX-1W



## Anti-Curl Collar with Collar Stays (M's)

Helps maintain collar shape and structure, even after washing

## Classic 3-Button Placket (M's)

Classic polo styling that is easy to wear and easy to style

## UPF Rating 30+

Protects the skin from the sun's rays

## Mechanical Stretch

Provides added comfort, flexibility and shape retention

## Hem Side Slits

Adds fashion detail, comfort and ease of movement at hem

## Anti-Curl Combination Collar with Collar Stays (W's)

Helps maintain collar shape and structure, even after washing

## Classic 5-Button Placket (W's)

Classic polo styling that is easy to wear and easy to style

## Contoured Seaming (W's)

Provides a closer to body fit and sleek silhouette

## Self Fabric Knit Cuff

Provides enhanced durability and comfort



RESPONSIBLY  
PRODUCED  
COTTON

## Fabrication

100% Cotton Pique

## Weight

Lightweight – 5.01 oz/yd<sup>2</sup> / 170gsm

## Technical Features



## Men's Sizes

S-3XL (Black, Granite S-5XL)

## Women's Sizes

XS-2XL (Black, Granite XS-3XL)

## Decoration Options



M's & W's: Black



M's & W's: Granite



M's & W's: Midnight



M's & W's: Retro Blue



M's & W's: Storm Grey

# Settebello

## Premium Cotton Comfort

### SETTEBELLO S/S POLO

PSX-4W

The Settebello H2X-DRY® Moisture Management polo combines high performance features with a high style design. Artfully crafted features include set-in sleeves, a self-fabric collar and a classic button placket to take looking great to new heights. Made from Certified Cotton for superior softness with GRS-Certified Polyester to help maintain shape and transport moisture away from the skin. UPF rating of 30+ protects the skin from the sun's rays.



#### Classic 5-Button Placket

For classic yet casual polo styling

#### H2XDRY MOISTURE MANAGEMENT

Allows perspiration to escape from the body, helping to maintain optimal body temperature and comfort

#### UVX SUN PROTECTION

**UPF Rating 30+**  
Technology that protects the skin from the sun's rays

# SETTEBELLO S/S POLO

PSX-4M | PSX-4W



## Anti-Curl Collar with Collar Stays (M's)

Helps maintain collar shape and structure, even after washing

## Classic 3-Button Placket (M's)

For classic polo styling

## UPF Rating 30+

Protects the skin from the sun's rays

## STORMTECH H2X-DRY® Moisture Management

Allows perspiration to escape from the body, helping to maintain optimal body temperature and comfort



## Snag Resistant Fabric

Improves the snag resistance of the fabric, and leaves the garment looking new wear after wear

## Anti-Curl Combination Collar with Collar Stays (W's)

Contoured collar helps maintain shape and structure, even after washing

## Classic 5-Button Placket (W's)

For classic yet casual polo styling

## Contoured Seaming (W's)

Provides a closer to body fit and sleek silhouette

## Mechanical Stretch

Provides added comfort, flexibility and shape retention

## Hem Side Slits

Adds styling detail, comfort and ease of movement at hem



RECYCLED CONTENT



RESPONSIBLY PRODUCED COTTON



ANTI-SNAG

## Fabrication

60% Cotton/40% Recycled Polyester Single Jersey

## Weight

Lightweight – 4.57 oz/yd<sup>2</sup> / 155gsm

## Technical Features

**H2XDRY**  
MOISTURE MANAGEMENT

**UVX**  
SUN PROTECTION

## Men's Sizes

S-3XL (Black, Dolphin, Ice Blue S-5XL)

## Women's Sizes

XS-2XL (Black, Dolphin, Ice Blue XS-3XL)

## Decoration Options



M's & W's: Black



M's & W's: Dolphin



M's & W's: Classic Blue



M's & W's: Ice Blue



M's & W's: Sage Green



M's & W's: Rust



M's & W's: White



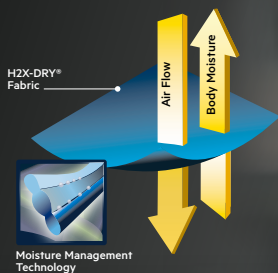


# Explore Technical Performance Polos

## Refined All-Day Comfort

Polos that work as hard as you do. As one of the most in-demand and versatile wardrobe items, they are that essential addition you just can't live without. Whether you require high-tech performance with moisture management technology, industrial strength fabrics, or casual day-to-day attire, our on-trend range of Polos and Tees exude quality, style and a keen eye for fashion.

**H2X DRY**  
MOISTURE MANAGEMENT





# Milano

## Refined All-Day Comfort

MILANO SPORT POLO PMT-1

### Self-Fabric Collar

Constructed from the same material as the body of the garment for maximum comfort

### STORMTECH H2X-DRY® Moisture Management

Draws moisture away from the skin, helping to maintain optimal body comfort

### Mechanical Stretch

Provides added comfort, flexibility and shape retention

### Hem Side Slits

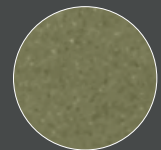
Adds styling detail, comfort and ease of movement at hem

### Classic 3-Button Placket (M's)

For classic polo styling

### UPF Rating 50+

Protects the skin from the sun's rays



### Snag Resistant Fabric

Improves the snag resistance of the fabric, and leaves the garment looking new wear after wear

**UVX**  
SUN PROTECTION

**H2X DRY**  
MOISTURE MANAGEMENT

**anti-snag**  
CONSTRUCTION

# Mistral

## Refined All-Day Comfort

### MISTRAL HEATHERED POLO

SPL-1W

With ultra-soft double pique fabric and a heathered finish, the Mistral Heathered Polo is hard-wearing, yet stylish and lightweight. The color-blocked H2X-DRY® performance polo features a 3-button placket and a combination shoulder that allows unrestricted motion.



**H2XDRY**  
MOISTURE MANAGEMENT

Allows perspiration to escape from the body, helping to maintain optimal body temperature and comfort

### Open-V Buttonless Placket

Provides modern, premium styling, flexibility, and comfort

**UVX**  
SUN PROTECTION

### UPF Rating 50+

Technology that protects the skin from the sun's rays



## MISTRAL HEATHERED POLO

SPL-1 | SPL-1W

### Additional Features

- Combination Shoulder
- Collar Stand
- Classic 3-Button Placket (M's)
- Open-V Buttonless Placket (W's)
- Front Back Princess Style Seams (W's)

### Fabrication

100% Polyester Double Pique

### Weight

Lightweight - 5.13 oz/yd<sup>2</sup> / 174gsm

### Men's Sizes

S-3XL (Charcoal Heather, Dolphin S-5XL)

### Women's Sizes

XS-2XL

### Decoration Options



### Technical Features

**H2XDRY**  
MOISTURE MANAGEMENT

**UVX**  
SUN PROTECTION



ANTI-SNAG



M's & W's: Charcoal  
Heather



M's & W's: Dolphin

### STORMTECH H2X-DRY®

#### Moisture Management

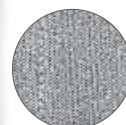
Allows perspiration to escape from the body, helping to maintain optimal body temperature and comfort



W's: Ocean  
(Available in M's)



M's: Titanium



Snag Resistant  
Fabric

**UPF Rating 50+**  
Protects the skin from the sun's rays

## TORRENTE S/S POLO

STW-1 | STW-1W

### Additional Features

- Engineered Anti-Curl Collar
- 3-Button Placket (M's)
- Classic 4-Button Placket (W's)
- Dropped Back with Hem Side Slits
- Mechanical Stretch

### Fabrication

50% Recycled Polyester/50% Polyester

### Weight

Lightweight - 4.72 oz/yd<sup>2</sup> / 160gsm

### Men's Sizes

S-5XL

### Women's Sizes

XS-3XL

### Decoration Options



### Technical Features

**H2XDRY**  
MOISTURE MANAGEMENT

**UVX**  
SUN PROTECTION



RECYCLED  
CONTENT

### STORMTECH H2X-DRY®

#### Moisture Management

Allows perspiration to escape from the body, helping to maintain optimal body temperature and comfort



W's: Grey Mix  
(Available in M's)



M's: Charcoal Mix  
(Available in W's)



# Volante

---

## Premium Cotton Comfort

### Volante H2X-DRY® S/S Polo

PSX-5M | PSX-5W

The Volante H2X-DRY® Polo features an ultra-soft touch 5-ounce single jersey fabric made with an equal blend of GRS-Certified Polyester and Polyester plus Spandex for optimal stretch and shape retention. H2X-DRY® moisture management technology draws moisture away from the skin, helping you to maintain optimal body comfort. UPF Rating of 40+ protects the skin from the sun's rays.





# VOLANTE H2X-DRY® S/S POLO

PSX-5M | PSX-5W



**Anti-Curl Collar with Collar Stays (M's)**  
Helps maintain collar shape and structure, even after washing

**Classic 3-Button Placket (M's)**  
Classic polo styling that is easy to wear and easy to style

**STORMTECH H2X-DRY® Moisture Management**  
Allows perspiration to escape from the body, helping to maintain optimal body temperature and comfort

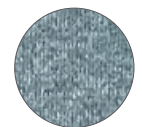
**Polygiene® Freshness Technology**  
Prevents the growth of odor causing bacteria. Wear more, wash less.

**Hem Side Slits**  
Adds fashion detail, comfort and ease of movement at hem

**UPF Rating 40+**  
Protects the skin from the sun's rays

**Open-V 2-Button Placket (W's)**  
Provides modern, premium styling, flexibility, and comfort

**Contoured Seaming (W's)**  
Provides a closer to body fit and sleek silhouette



**Snag Resistant Fabric**  
Improves the snag resistance of the fabric and leaves the garment looking new wear after wear



RECYCLED  
CONTENT



ACTIVE  
STRETCH



ANTI-SNAG

## Additional Features

- 4-Way Stretch Fabric

## Fabrication

47% Recycled Polyester/47% Polyester/  
6% Spandex Single Jersey

## Weight

Lightweight – 5.01 oz/yd<sup>2</sup> / 170gsm

## Technical Features



## Men's Sizes

S-3XL (Charcoal Heather, Midnight Heather S-5XL)

## Women's Sizes

XS-2XL (Charcoal Heather, Midnight Heather XS-3XL)

## Decoration Options



M's & W's: Charcoal Heather



M's & W's: Granite Heather



M's & W's: Midnight Heather



M's & W's: Retro Blue Heather

# Dockyard

## Unparalleled Performance

### DOCKYARD PERFORMANCE S/S POLO

VLX-1W

The Dockyard Performance Polo is built with durable 100% Polyester double pique knit fabric and treated with Polygiene® Freshness technology to control odor; wear more, wash less. STORMTECH H2X-DRY® Moisture Management draws moisture away from the skin, helping to maintain optimal body comfort. UPF Rating 50+ protects the skin from the sun's rays.



**H2X DRY**  
MOISTURE MANAGEMENT

Allows perspiration to escape from the body, helping to maintain optimal body temperature and comfort

**Open-V 2-Button  
Placket (W's)**  
For classic polo styling



**POLYGIENE®**  
FRESHNESS

Prevents the growth of odor causing bacteria. Wear more, wash less.

**UVX**  
SUN PROTECTION

**UPF Rating 50+**  
Protects the skin from the sun's rays



## DOCKYARD PERFORMANCE S/S POLO

VLX-1 | VLX-1W

### Additional Features

- UPF Rating 50+
- 3-Button Placket (M's)
- Single Chest Pocket (M's)
- Open-V 2-Button Placket (W's)
- Contoured Seaming (W's)
- Collar Stand
- Double Needle Topstitching

### Fabrication

100% Polyester Double Pique

### Weight

Lightweight - 5.13 oz/yd<sup>2</sup> / 174gsm

### Men's Sizes

S-5XL

### Women's Sizes

XS-3XL

### Decoration Options



### Technical Features



### Polygiene® Freshness

**Technology**  
Prevents the growth of odor causing bacteria. Wear more, wash less

### STORMTECH H2X-DRY®

#### Moisture Management

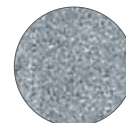
Allows perspiration to escape from the body, helping to maintain optimal body temperature and comfort



**H2XDRY**  
ACTIVE MOISTURE  
MANAGEMENT

### Dropped Back with Hem Side Slits

At the bottom of side seams add fashion detail, comfort and ease of movement



**Snag Resistant Fabric**



W's: Navy Heather  
(Available in M's)

M's: Dolphin Heather  
(Available in W's)



M's & W's: Black

## CAMINO PERFORMANCE S/S POLO

TFX-1 | TFX-1W

### Additional Features

- 3-Button Placket (M's)
- Open-V 2-Button Placket (W's)
- Partial Collar Stand (W's)
- Contoured Seaming (W's)
- Hem Side Slits
- Self-Fabric Collar
- Mechanical Stretch

### Fabrication

87% Recycled Polyester/  
13% Spandex Single Jersey

### Weight

Mid-Weight - 5.43 oz/yd<sup>2</sup> / 184gsm

### Men's Sizes

S-5XL

### Women's Sizes

XS-3XL

### Decoration Options



### Technical Features



**UPF Rating 50+**  
Protects the skin from the sun's rays

### STORMTECH H2X-DRY®

#### Moisture Management

Allows perspiration to escape from the body, helping to maintain optimal body temperature and comfort



**H2XDRY**  
ACTIVE MOISTURE  
MANAGEMENT



M's & W's: Black

W's: Graphite  
(Available in M's)

M's: Navy  
(Available in W's)



# Milano

## Refined All-Day Comfort

### MILANO SPORTS POLO

PMT-1W

The Milano Sports Polo is designed with 100% Polyester double pique fabric with mechanical stretch properties. Articulated action shoulders allow you to move freely without binding at the shoulder. H2X-DRY® moisture management technology draws moisture away from the skin, helping you to maintain optimal body comfort.



**H2XDRY**  
MOISTURE MANAGEMENT

Allows perspiration to escape from the body, helping to maintain optimal body temperature and comfort

**Open-V 2-Button  
Placket (W's)**  
For classic polo styling



**anti-snag**  
CONSTRUCTION

Improves the snag resistance of the fabric, and leaves the garment looking new wear after wear

**UVX**  
SUN PROTECTION

**UPF Rating 50+**  
Protects the skin from the sun's rays



## MILANO SPORTS POLO

PMT-1 | PMT-1W

### Additional Features

- 3-Button Placket (M's)
- Open-V 2-Button Placket (W's)
- Princess Style Seams (W's)
- Articulated Action Shoulders
- Self-Fabric Collar
- Mechanical Stretch

### Fabrication

100% Polyester Double Pique,

### Weight

Lightweight - 4.28 oz/yd<sup>2</sup> / 145gsm

### Men's Sizes

S-3XL (Navy, Black, Dolphin, Azure Blue, Ice Blue S-5XL)

### Women's Sizes

XS-2XL (Navy, Black, Dolphin, Ice Blue XS-3XL)

### Decoration Options



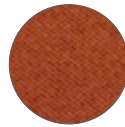
### Technical Features

**H2XDRIY**  
MOISTURE MANAGEMENT

**UVX**  
SUN PROTECTION



ANTI-SNAG



Snag Resistant Fabric

### STORMTECH H2X-DRY®

#### Moisture Management

Allows perspiration to escape from the body, helping to maintain optimal body temperature and comfort



**UPF Rating 50+**  
Protects the skin from the sun's rays

**Hem Side Slits**  
Add fashion detail, comfort and ease of movement



M's & W's: Black M's & W's: Dolphin M's & W's: Navy M's & W's: Azure Blue M's & W's: Ice Blue



W's: Rust  
(Available in M's)

M's: Sage Green  
(Available in W's)

## TREELINE PERFORMANCE S/S POLO

PTS-1 | PTS-1W

### Additional Features

- 3-Button Placket (M's)
- Open-V 3-Button Placket (W's)
- UPF Rating 50+
- Partial Collar Stand (W's)
- Hem Side Slits
- Mechanical Stretch

### Fabrication

100% Recycled Polyester Double Pique

### Weight

Lightweight - 4.28 oz/yd<sup>2</sup> / 145gsm

### Men's Sizes

S-5XL (Back, Navy S-6XL)

### Women's Sizes

XS-3XL

### Decoration Options



### Technical Features

**H2XDRIY**  
MOISTURE MANAGEMENT

**UVX**  
SUN PROTECTION



RECYCLED CONTENT



ANTI-SNAG



Snag Resistant Fabric



M's & W's: Black



W's: Navy  
(Available in M's)

M's: Graphite  
(Available in W's)

### STORMTECH H2X-DRY®

#### Moisture Management

Allows perspiration to escape from the body, helping to maintain optimal body temperature and comfort



**UPF Rating 50+**  
Protects the skin from the sun's rays

# Explore Vibrant Prints

---

Express Yourself

## Sienna S/S Polo

DXP-2 | DXP-2W

Sublimated horizontal gradient stripe design with H2X-DRY® moisture management technology, and UPF sun protection. This performance polo delivers style and technicality for long-lasting comfort and performance. Made from GRS-Certified Polyester.





## GALAPAGOS S/S POLO

DXP-3 | DXP-3W

### Additional Features

- Engineered Anti-Curl Collar
- Classic 3-Button Placket (M's)
- Open-V 2-Button Placket (W's)
- Contoured Seaming (W's)
- Articulated Action Shoulders
- Dropped Back with Hem Side Slits

### Fabrication

100% Recycled Polyester Double Pique

### Weight

Lightweight - 5.13 oz/yd<sup>2</sup> / 174gsm

### Men's Sizes

S-3XL (Dolphin S-5XL)

### Women's Sizes

XS-2XL

### Decoration Options



### Technical Features

**H2XDRY**  
MOISTURE MANAGEMENT

**UVX**  
SUN PROTECTION



RECYCLED  
CONTENT



M's & W's: Dolphin

### STORMTECH H2X-DRY®

#### Moisture Management

Allows perspiration to escape from the body, helping to maintain optimal body temperature and comfort



### UPF Rating 50+

Protects the skin from the sun's rays

### Mechanical Stretch

Provides added comfort, flexibility and shape retention



W's: Bright Red  
(Available in M's)

M's: Classic Blue  
(Available in W's)

## SIENNA S/S POLO

DXP-2 | DXP-2W

### Additional Features

- Engineered Anti-Curl Collar
- Classic 3-Button Placket (M's)
- Open-V 2-Button Placket (W's)
- Contoured Seaming (W's)
- Dropped Back with Hem Side Slits

### Fabrication

100% Recycled Polyester Double Pique

### Weight

Lightweight - 5.13 oz/yd<sup>2</sup> / 174gsm

### Men's Sizes

S-3XL (Dolphin S-5XL)

### Women's Sizes

XS-2XL

### Decoration Options



### Technical Features

**H2XDRY**  
MOISTURE MANAGEMENT

**UVX**  
SUN PROTECTION



RECYCLED  
CONTENT



M's & W's: Dolphin

### STORMTECH H2X-DRY® Moisture

#### Management

Allows perspiration to escape from the body, helping to maintain optimal body temperature and comfort



### UPF Rating 50+

Protects the skin from the sun's rays

### Mechanical Stretch

Provides added comfort, flexibility and shape retention



W's: Classic Blue  
(Available in M's)

M's: Bright Red  
(Available in W's)

## WAVELENGTH POLO

NXT-1 | NXT-1W

Bringing our passion for design to a polo collection. The Wavelength Polo provides a mechanical stretch fabric for superior comfort and unrestricted movement, coupled with a low profile sublimated print, H2X-DRY® moisture wicking technology, snag-resistant fabric, and UPF sun protection.



### Classic 3-Button Placket (M's)

For classic polo styling

### STORMTECH H2X-DRY® Moisture Management

Allows perspiration to escape from the body, helping to maintain optimal body temperature and comfort

### Snag Resistant Fabric

Improves the snag resistance of the fabric, and leaves the garment looking new wear after wear

### Open -V 3-Button Placket (W's)

Provides modern, premium styling, flexibility, and comfort

### UPF Rating 50+

Protects the skin from the sun's rays

### Hem Side Slits

Adds styling detail, comfort and ease of movement at hem



ANTI-SNAG

### Additional Features

- Mechanical Stretch
- Collar Stand
- Self-Fabric Collar

### Men's Sizes

S-3XL (Black/Titanium S-5XL)

### Women's Sizes

XS-2XL

### Decoration Options



### Fabrication

100% Polyester Double Pique

### Weight

Lightweight - 5.13 oz/yd² / 174gsm

### Technical Features

**H2XDRY**  
MOISTURE MANAGEMENT

**UVX**  
SUN PROTECTION



M's & W's: Black/Titanium



M's & W's: Black/Bright Red



## REFLEX POLO

DXP-1 | DXP-1W

Style, function, quality and fit defines the Reflex Polo. The over-sized print makes a statement and H2X-DRY® fabric wicks moisture away from the skin for optimal comfort. Collar stand allows retention of shape and the side slits allow for ease of movement.

### Additional Features

- Snag Resistant Fabric
- Hem Side Slits
- Collar Stand
- Self-Fabric Collar
- Mechanical Stretch

**Fabrication** 100% Polyester Double Pique

**Weight** Lightweight - 5.13 oz/yd<sup>2</sup> / 174gsm

**Men's Sizes** S-3XL (Dolphin S-6XL)

**Women's Sizes** XS-2XL (Dolphin XS-3XL)

### Decoration Options



### Technical Features



### STORMTECH H2X-DRY® Moisture Management

Allows perspiration to escape from the body, helping to maintain optimal body temperature and comfort

### Classic 3-Button Placket

For classic polo styling



**UPF Rating 30+**  
Protects the skin from the sun's rays

M's: Dolphin  
(Available in W's)

W's: Azure Blue  
(Available in M's)

## MIRAGE POLO

TXR-1 | TXR-1W

Functional fashionable. With breathable, snag resistant fabric and UPF protection, the standup collar of the Mirage Polo keeps its form through day's end.

### Additional Features

- Snag Resistant Fabric
- Classic 3-Button Placket (M's)
- Open-V 3-Button Placket (W's)
- Collar Stand
- Self-Fabric Collar
- Gradient Sublimated Print on Front

**Fabrication** 100% Polyester

**Weight** Lightweight - 4.72 oz/yd<sup>2</sup> / 160gsm

**Men's Sizes** S-3XL (Carbon Heather S-6XL)

**Women's Sizes** XS-2XL (Carbon Heather XS-3XL)

### Decoration Options



### Technical Features



### STORMTECH H2X-DRY® Moisture Management

Allows perspiration to escape from the body, helping to maintain optimal body temperature and comfort



**UPF Rating 40+**  
Protects the skin from the sun's rays

**Hem Side Slits**  
Adds styling detail, comfort and ease of movement at hem

M's: Carbon Heather  
(Available in W's)

W's: Navy Heather  
(Available in M's)

# Gulf Stream

## Express Yourself

### GULF STREAM POLO

VP-2

The Gulf Stream Polo provides a mechanical stretch fabric for superior comfort and unrestricted movement, coupled with a subtle sublimated print, H2X-DRY® moisture-wicking technology, snag-resistant fabric, and UPF sun protection. Bringing our passion for design to a polo collection.



### H2XDRY® MOISTURE MANAGEMENT

Allows perspiration to escape from the body, helping to maintain optimal body temperature and comfort

### UVX SUN PROTECTION

**UPF Rating 40+**  
Protects the skin from the sun's rays

### 3-Button Placket (M's)

Classic polo styling which can be fully buttoned up or down



### anti-snag CONSTRUCTION

Improves the snag resistance of the fabric, and leaves the garment looking new after wear



## GULF STREAM POLO

VP-2 | VP-2W

### Additional Features

- Self Fabric Non-Roll Collar
- Collar Stand (M's)
- Laser-Cut and Bonded Placket (M's)
- V-Neck Opening (W's)
- Contoured Seaming (W's)

### Fabrication

100% Polyester Double Pique

### Weight

Lightweight - 5.13 oz/yd<sup>2</sup> / 174gsm

### Men's Sizes

S-3XL (Carbon S-5XL)

### Women's Sizes

XS-2XL

### Decoration Options



### Technical Features



### STORMTECH H2X-DRY®

#### Moisture Management

Allows perspiration to escape from the body, helping to maintain optimal body temperature and comfort



W's: Navy  
(Available in M's)

M's: Carbon  
(Available in W's)

**UPF Rating 50+**  
Protects the skin from the sun's rays

**Hem Side Slits**  
Adds styling detail, comfort and ease of movement at hem

## VIBE PERFORMANCE POLO

VP-1 | VP-1W

### Additional Features

- Snag Resistant Fabric
- Hem Side Slits (W's)
- All Over Variegated Stripe Print
- Collar Stand
- Mechanical Stretch

### Fabrication

100% Polyester Double Pique

### Weight

Lightweight - 5.13 oz/yd<sup>2</sup> / 174gsm

### Men's Sizes

S-5XL

### Women's Sizes

XS-2XL

### Decoration Options



### Technical Features



### Self-Fabric Collar

Constructed from the same material as the body of the garment for maximum comfort



**3-Button Placket**  
For classic polo styling



W's: Carbon/Black

M's: Carbon/Black

**STORMTECH H2X-DRY® Moisture Management**  
Allows perspiration to escape from the body, helping to maintain optimal body temperature and comfort

**UPF Rating 50+**  
Protects the skin from the sun's rays



# Performance Polos

## Unparalleled Performance

### ENDURANCE HD POLO

GPX-5

Engineered heavy-duty pique fabric with enhanced durability and breathability. The Endurance HD Polo features snag resistant fabric which leaves the garment looking clean and crisp. A hidden 3-button placket and contrast piping finish off a sleek style.



### H2X DRY

MOISTURE MANAGEMENT

Allows perspiration to escape from the body, helping to maintain optimal body temperature and comfort

### Contrast Piping

Provides a bold accent combined with sleek styling



### anti-snag CONSTRUCTION

Improves the snag resistance of the fabric, and leaves the garment looking new wear after wear

### UVX

SUN PROTECTION

UPF Rating 50+  
Protects the skin from the sun's rays

## ENDURANCE HD POLO

GPX-5 | GPX-5W

### Additional Features

- Rib Knit Collar
- Set-in Sleeve
- Hidden 3-Button Placket
- Contrast Piping
- Side Slits at Hem

### Fabrication

100% Polyester Pique

### Weight

Mid-Weight - 5.9 oz/yd<sup>2</sup> / 200gsm

### Men's Sizes

S-3XL (Black/Dolphin S-5XL)

### Women's Sizes

XS-2XL

### Decoration Options



### Technical Features



ANTI-SNAG

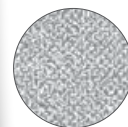
### STORMTECH H2X-DRY® Moisture Management

Allows perspiration to escape from the body, helping to maintain optimal body temperature and comfort

**Partial Collar Stand**  
Maintains collar shape and structure, even after washing



**UPF Rating 50+**  
Protects the skin from the sun's rays



**Snag Resistant Fabric**

M's: White/Dolphin  
(Available in W's)

W's: Navy/Navy  
(Available in M's)



M's & W's: Black/Dolphin



M's & W's: Azure Blue/  
Black

## PIRANHA PERFORMANCE POLO

IPS-4 | IPS-4W

### Additional Features

- 2-Button Placket (M's)
- 4-Button Placket (W's)
- Hem Side Slits
- 1x1 Rib Knit Collar

### Fabrication

91% Polyester, 9% Spandex

### Weight

Lightweight - 5.01 oz/yd<sup>2</sup> / 170gsm

### Men's Sizes

S-3XL (Black/Granite S-5XL)

### Women's Sizes

XS-2XL

### Decoration Options



### Technical Features



ANTI-SNAG

### STORMTECH H2X-DRY® Moisture Management

Allows perspiration to escape from the body, helping to maintain optimal body temperature and comfort

**Contrast Piping**  
Provides a bold accent combined with sleek styling



**Snag Resistant Fabric**

**UPF Rating 50+**  
Protects the skin from the sun's rays

M's: Black/Granite  
(Available in W's)

W's: Scarlet/Black



M's & W's: True Navy/  
Granite

# Sirocco

## Unparalleled Performance

### SIROCCO SPORTS POLO

PRX-1

The Sirocco Sports Polo is built from hardwearing 100% Polyester pique fabric in a rib knit collar and cuff construction to provide enhanced durability and comfort. H2X-DRY® moisture management technology draws moisture away from the skin, helping you to maintain optimal body comfort.



**H2XDRY**  
MOISTURE MANAGEMENT

Allows perspiration to escape from the body, helping to maintain optimal body temperature and comfort

#### 3-Button Placket

Classic polo styling which can be fully buttoned up or down



**anti-snag**  
CONSTRUCTION

Improves the snag resistance of the fabric, and leaves the garment looking new wear after wear

**UVX**  
SUN PROTECTION

**UPF Rating 40+**  
Protects the skin from the sun's rays



## SIROCCO SPORTS POLO

PRX-1 | PRX-1W

- Additional Features**
- 1x1 Rib Neck Collar
  - 3-Button Placket
  - Mechanical Stretch

**Fabrication** 100% Polyester Pique

**Weight** Lightweight - 4.13 oz/yd<sup>2</sup> / 140gsm

**Men's Sizes** S-5XL

**Women's Sizes** XS-3XL

**Decoration Options**



**Technical Features**



M's & W's: Black



M's & W's: Navy

**STORMTECH H2X-DRY® Moisture Management**  
Allows perspiration to escape from the body, helping to maintain optimal body temperature and comfort

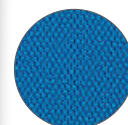


**UPF Rating 40+**  
Protects the skin from the sun's rays

**Hem Side Slits**  
Add fashion detail, comfort and ease of movement

W's: Dolphin  
(Available in M's)

M's: Azure Blue  
(Available in W's)



**Snag Resistant Fabric**

## INERTIA SPORT POLO

XP-1 | XP-1W

- Additional Features**
- Contrast Piping on Collar Placket and Shoulder
  - Double Needle Stitching
  - 4-Button Placket (W's)
  - Mechanical Stretch
  - Hem Side Slits

**Fabrication** 100% Polyester

**Weight** Lightweight - 4.28 oz/yd<sup>2</sup> / 145gsm

**Men's Sizes** S-3XL (Black/Graphite S-6XL)  
(Navy/Graphite S-5XL)

**Women's Sizes** XS-2XL (Black/Graphite XS-3XL)

**Decoration Options**



**Technical Features**



**3-Button Placket (M's)**  
Classic polo styling which can be fully buttoned up or down

**UPF Rating 30+**  
Protects the skin from the sun's rays

**STORMTECH H2X-DRY® Moisture Management**  
Allows perspiration to escape from the body, helping to maintain optimal body temperature and comfort

W's: Black/Graphite  
(Available in M's)

M's: Navy/Graphite  
(Available in W's)



**Snag Resistant Fabric**

# Eclipse

---

## Unparalleled Performance



### Eclipse H2X-DRY® Pique Polo

PG-1 | PG-1W

Hard-wearing, snag-resistant micro-pique fabric combined with H2X-DRY® moisture-wicking technology to keep you cool and dry in any environment. The Eclipse Pique Polo features a 3-button placket, durable rib-knit tailored collar and side hem slits for maneuverability at work or play.

# ECLIPSE H2X-DRY® PIQUE POLO

PG-1 | PG-1W



**3-Button Placket (M's)**  
For classic polo styling

**STORMTECH H2X-DRY® Moisture Management**  
Allows perspiration to escape from the body, helping to maintain optimal body temperature and comfort

**Open-V 3-Button Placket (W's)**  
For classic polo styling

**UPF Rating 40+**  
Protects the skin from the sun's rays



**Anti-Snag Fabric**  
Improves the snag resistance of the fabric, and leaves the garment looking new wear after wear

## Additional Features

- 1x1 Rib Knit Collar
- Mechanical Stretch

## Fabrication

100% Polyester Pique

## Weight

Lightweight - 4.13 oz/yd<sup>2</sup> / 140gsm

## Technical Features



## Men's Sizes

S-3XL (Black, Navy, Carbon S-6XL)  
(Azure Blue, Cool Silver, Ice Blue S-5XL)

## Women's Sizes

XS-2XL (Black, Navy, Carbon, Cool Silver, Ice Blue XS-3XL)

## Decoration Options



M's & W's: Black

M's & W's: Carbon

M's & W's: Navy

M's & W's: Azure Blue

M's & W's: Ice Blue

M's & W's: Bright Red

M's & W's: Rust

M's & W's: Cool Silver

M's & W's: White



# Apollo

## Unparalleled Performance

### APOLLO H2X-DRY® POLO

PS-1W

Action silhouette sport polo, features moisture-wicking H2X-DRY® technology, a 3-button placket, and a self-fabric collar designed to keep its shape after washing.



### H2XDRY® MOISTURE MANAGEMENT

Allows perspiration to escape from the body, helping to maintain optimal body temperature and comfort

**3-Button Placket**  
For classic yet casual polo styling

### UVX SUN PROTECTION

**UPF Rating 40+**  
Technology that protects the skin from the sun's rays



## APOLLO H2X-DRY® POLO

PS-1 | PS-1W

### Additional Features

- 3-Button Placket
- Mechanical Stretch
- Double Needle Stitching at Cuff and Hem
- Hem Side Slit

### Fabrication

100% Polyester Double Pique

### Weight

Lightweight - 4.28 oz/yd<sup>2</sup> / 145gsm

### Men's Sizes

S-3XL (Black, Graphite, Navy S-6XL)  
(Royal, White S-5XL)

### Women's Sizes

XS-2XL (Black, Navy, Royal, Graphite, White XS-3XL)

### Decoration Options



### Technical Features



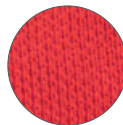
### Self-Fabric Collar

Constructed from the same material as the body of the garment for maximum comfort

### STORMTECH H2X-DRY®

#### Moisture Management

Allows perspiration to escape from the body, helping to maintain optimal body temperature and comfort



### Snag Resistant Fabric



M's & W's: Black

M's & W's: Graphite

M's & W's: Navy

M's & W's: White



W's: Scarlet Red  
(Available in M's)

M's: Royal  
(Available in W's)

### UPF

Rating

40+

Protects the skin from the sun's rays

## PHOENIX H2X-DRY® POLO

PS-2 | PS-2W

### Additional Features

- 3-Button Placket
- Mechanical Stretch
- Double Needle Stitching at Cuff and Hem
- Hem Side Slit

### Fabrication

100% Polyester Double Pique

### Weight

Lightweight - 4.28 oz/yd<sup>2</sup> / 145gsm

### Men's Sizes

S-3XL

### Women's Sizes

XS-2XL

### Decoration Options



### Technical Features



### STORMTECH H2X-DRY® Moisture Management

Allows perspiration to escape from the body, helping to maintain optimal body temperature and comfort

### 1x1 Rib Knit Collar

Rib knit construction provides enhanced durability and comfort



### Snag Resistant Fabric



M's: Granite



W's: Navy  
(Available in M's)

M's: Black  
(Available in W's)

### UPF Rating

40+

Protects the skin from the sun's rays



# Explore STORMTECH Premium Tees

As one of the most in-demand and versatile wardrobe items, they are that essential addition you just can't live without. Whether you require high-tech performance with moisture management technology, industrial strength fabrics, or casual day-to-day attire, our on-trend range of Tees exudes quality, style and a keen eye for fashion.





# Oasis

## Premium Cotton Comfort

OASIS S/S TEE TSX-3M | TSX-3W



**H2X DRY**  
MOISTURE MANAGEMENT



**POLYGIENE**  
FRESHNESS

  
**anti-snap**  
CONSTRUCTION

**UVX**  
SUN PROTECTION



# Montebello

---

## Premium Cotton Comfort

### Montebello Performance S/S Tee

CPF-1 | CPF-1W

The Montebello Performance Short Sleeve Tee combines Certified Cotton for superior softness with durable GRS-Certified Polyester to help maintain shape and transport moisture away from the skin. UPF Rating 50+ protects the skin from the sun's rays.



## MONTEBELLO PERFORMANCE S/S TEE

CPF-1 | CPF-1W

### Additional Features

- 1x1 Rib Knit Crew Neck (M's)
- 1x1 Rib Knit Scoop Neck (W's)
- Hem Side Slits

### Fabrication

58% Cotton/38% Recycled Polyester/  
4% Spandex Single Jersey

### Weight

6.19 oz/yd<sup>2</sup> / 210gsm

### Men's Sizes

2XS-3XL (Black & Charcoal Heather 2XS-5XL)

### Women's Sizes

XS-2XL (Black & Charcoal Heather XS-3XL)

### Decoration Options



### Technical Features

**H2XDRY**  
MOISTURE MANAGEMENT

**UVX**  
SUN PROTECTION



RECYCLED  
CONTENT



RESPONSIBLY  
PRODUCED  
COTTON

**STORMTECH  
H2X-DRY® Moisture  
Management**  
Allows perspiration  
to escape from the  
body, helping to  
maintain optimal  
body temperature  
and comfort

**Taped Neck Seam**  
For long-lasting  
shape retention



**UPF Rating  
50+**  
Protects the  
skin from the  
sun's rays



M's & W's: Black



M's & W's:  
Charcoal Heather



M's & W's: Indigo



M's & W's: White



W's: Taupe  
(Available in M's)

M's: Ash Heather  
(Available in W's)

## MONTEBELLO PERFORMANCE L/S TEE

CPF-2 | CPF-2W

### Additional Features

- Taped Neck Seam
- 1x1 Rib Knit Crew Neck (M's)
- 1x1 Rib Knit Scoop Neck (W's)
- Hem Side Slits

### Fabrication

58% Cotton/38% Recycled Polyester/  
4% Spandex Single Jersey,

### Weight

6.19 oz/yd<sup>2</sup> / 210gsm

### Men's Sizes

2XS-3XL (Black, Charcoal Heather 2XS-5XL)

### Women's Sizes

XS-2XL (Black, Charcoal Heather XS-3XL)

### Decoration Options



### Technical Features

**H2XDRY**  
MOISTURE MANAGEMENT

**UVX**  
SUN PROTECTION



RECYCLED  
CONTENT



RESPONSIBLY  
PRODUCED  
COTTON

**UPF Rating  
50+**  
Protects the  
skin from the  
sun's rays

**STORMTECH  
H2X-DRY® Moisture  
Management**  
Allows perspiration  
to escape from the  
body, helping  
to maintain optimal  
body temperature  
and comfort



W's: Indigo  
(Available in M's)

M's: Charcoal Heather  
(Available in W's)



M's & W's: Black



M's & W's: White



# Oasis

---

## Premium Cotton Comfort



### Oasis S/S Tee

TSX-3M | TSX-3W

The Oasis Performance Tee features an ultra-soft touch single jersey fabric made with 55% Certified Cotton and 40% GRS-Certified Polyester with 5% Spandex. Set in sleeves allow you to move freely without binding at the shoulder. H2X-DRY® moisture management technology draws moisture away from the skin, helping you to maintain optimal body comfort. Rib knit collar for maximum comfort. UPF Rating 50+ protects the skin from the sun's rays.

# OASIS S/S TEE

TSX-3M | TSX-3W



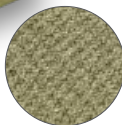
**STORMTECH  
H2X-DRY® Moisture  
Management**  
Allows perspiration  
to escape from the  
body, helping to  
maintain optimal  
body temperature and  
comfort

**Polygiene®  
Freshness  
Technology**  
Prevents the  
growth of odor  
causing bacteria.  
Wear more, wash  
less.

**Mechanical Stretch**  
Provides added  
comfort, flexibility  
and shape retention

**1x1 Rib Knit Crew  
Neck**  
Provides enhanced  
durability and comfort  
at the neck opening

**UPF Rating 50+**  
Protects the skin from  
the sun's rays



**Snag Resistant Fabric**  
Improves the snag  
resistance of the fabric, and  
leaves the garment looking  
new wear after wear

**Hem Side Slits (W's)**  
Adds styling detail,  
comfort and ease of  
movement at hem



RECYCLED  
CONTENT



RESPONSIBLY  
PRODUCED  
COTTON



ANTI-SNAG

**Fabrication** 55% Cotton/40% Recycled Polyester/  
5% Spandex Single Jersey

**Weight** Lightweight - 4.75 oz/yd<sup>2</sup> / 160gsm

**Technical  
Features**



**Men's Sizes** S-3XL (Black, Dolphin, Ice Blue S-5XL)

**Women's Sizes** XS-2XL (Black, Dolphin, Ice Blue XS-3XL)

**Decoration  
Options**



M's & W's: Black



M's & W's: Dolphin



M's & W's: Navy



M's & W's: Ice Blue



M's & W's: Sage Green



M's & W's: Rust



M's & W's: White

# Settebello

## Premium Cotton Comfort

### SETTEBELLO S/S TEE

TSX-4W

The Settebello Tee combines 60% Certified Cotton for superior softness with durable GRS-Certified Polyester to help maintain shape and transport moisture away from the skin. The taped neck seam provides extra comfort and durability. Mechanical stretch fabric provides an optional range of movement. UPF Rating 30+ protects the skin from the sun's rays.



**H2X DRY**  
MOISTURE MANAGEMENT

Allows perspiration to escape from the body, helping to maintain optimal body temperature and comfort



**anti-snog**  
CONSTRUCTION

Improves the snag resistance of the fabric, and leaves the garment looking new wear after wear

**UVX**  
SUN PROTECTION

**UPF Rating 30+**  
Protects the skin from the sun's rays





## SETTEBELLO S/S TEE

TSX-4M | TSX-4W

- Additional Features**
- 1x1 Rib Knit Crew Neck
  - Snag Resistant Fabric
  - Hem Side Slits (W's)

**Fabrication** 60% Cotton/40% Recycled Polyester Single Jersey

**Weight** Lightweight - 4.57 oz/yd<sup>2</sup> / 155gsm

**Men's Sizes** S-3XL (Black, Dolphin, Ice Blue S-5XL)

**Women's Sizes** XS-2XL (Black, Dolphin, Ice Blue XS-3XL)

**Decoration Options**



**Technical Features**

**H2XDRIY**  
MOISTURE MANAGEMENT

**UVX**  
SUN PROTECTION



RECYCLED  
CONTENT



RESPONSIBLY  
PRODUCED  
COTTON



ANTI-SNAG

**Mechanical Stretch**  
Provides added  
comfort, flexibility and  
shape retention

**STORMTECH H2X-DRY®**  
**Moisture Management**  
Allows perspiration to escape  
from the body, helping  
to maintain optimal body  
temperature and comfort



**UPF Rating 30+**  
Protects the skin  
from the sun's  
rays



M's & W's: Black

M's & W's: Dolphin

M's & W's:  
Classic Blue

M's & W's: Ice Blue

M's & W's: White

W's: Rust  
(Available in M's)

M's: Sage Green Heather  
(Available in W's)



**Snag Resistant Fabric**  
Improves the snag resistance  
of the fabric, and leaves the  
garment looking new wear  
after wear

## SETTEBELLO L/S TEE

TLX-4M | TLX-4W

- Additional Features**
- 1x1 Rib Knit Crew Neck Collar and Cuff
  - Snag Resistant Fabric
  - Hem Side Slits (W's)

**Fabrication** 60% Cotton/40% Recycled Polyester Single Jersey

**Weight** Lightweight - 4.57 oz/yd<sup>2</sup> / 155gsm

**Men's Sizes** S-3XL (Black S-5XL)

**Women's Sizes** XS-2XL (Black XS-3XL)

**Decoration Options**



**Technical Features**

**H2XDRIY**  
MOISTURE MANAGEMENT

**UVX**  
SUN PROTECTION



RECYCLED  
CONTENT



RESPONSIBLY  
PRODUCED  
COTTON



ANTI-SNAG

**UPF Rating 30+**  
Protects the  
skin from the  
sun's rays



**STORMTECH H2X-DRY®**  
**Moisture Management**  
Allows perspiration to escape  
from the body, helping  
to maintain optimal body  
temperature and comfort



**Mechanical Stretch**  
Provides  
added  
comfort,  
flexibility  
and shape  
retention



M's & W's: Black

M's & W's: White

W's: Dolphin  
(Available in M's)

M's: Classic Blue  
(Available in W's)

# Volante

## Refined All-Day Comfort

### **VOLANTE H2X-DRY® L/S TEE**

TLX-2W

The Volante Long Sleeve Tee features an ultra-soft touch 5-ounce single jersey fabric made with equal blend of GRS-Certified and virgin Polyester. Articulated action shoulders allow you to move freely without binding at the shoulder. H2X-DRY® moisture management technology draws moisture away from the skin, helping you to maintain optimal body comfort. Self-fabric collar for maximum comfort. UPF Rating 30+ protects the skin from the sun's rays.



**H2X-DRY**  
MOISTURE MANAGEMENT

Allows perspiration to escape from the body, helping to maintain optimal body temperature and comfort

### **Articulated Action Shoulders**

Ergonomic design detail promotes optimal range of movement



**POLYGIENE**  
FRESHNESS

Prevents the growth of odor causing bacteria. Wear more, wash less.

**UVX**  
SUN PROTECTION

**UPF Rating 30+**  
Protects the skin from the sun's rays

## VOLANTE H2X-DRY® S/S TEE

TSX-5M | TSX-5W

### Additional Features

- Snag Resistant Fabric
- Self-Fabric Crew Neck Collar
- 4-Way Stretch Fabric
- Articulated Action Shoulders
- Flatlock Seams
- Contoured Side Panels

### Fabrication

47% Recycled Polyester/47% Polyester/  
6% Spandex Single Jersey

### Weight

Lightweight – 5.01 oz/yd<sup>2</sup> / 170gsm

### Men's Sizes

S-3XL (Charcoal Heather S-5XL)

### Women's Sizes

XS-2XL (Charcoal Heather XS-3XL)

### Decoration Options



### Technical Features



### Polygiene® Freshness Technology

Prevents the growth of odor causing bacteria. Wear more, wash less.

### STORMTECH H2X-DRY® Moisture Management

Allows perspiration to escape from the body, helping to maintain optimal body temperature and comfort



H2XDRY  
ACTIVE MOISTURE  
MANAGEMENT



### UPF Rating 30+

Protects the skin from the sun's rays

M's: Rust

W's: Sage Green  
(Available in M's)

### Snag Resistant Fabric

Improves the snag resistance of the fabric, and leaves the garment looking new wear after wear



M's & W's: Charcoal  
Heather

M's & W's: Granite  
Heather

M's & W's: Ash  
Heather

W's: Ice Blue  
Heather

## VOLANTE H2X-DRY® L/S TEE

TLX-2M | TLX-2W

### Additional Features

- Snag Resistant Fabric
- Self-Fabric Crew Neck Collar
- 4-Way Stretch Fabric
- Articulated Action Shoulders
- Flatlock Seams
- Contoured Side Panels

### Fabrication

47% Recycled Polyester/47% Polyester/  
6% Spandex Single Jersey

### Weight

Lightweight – 5.01 oz/yd<sup>2</sup> / 170gsm

### Men's Sizes

S-3XL (Charcoal Heather S-5XL)

### Women's Sizes

XS-2XL (Charcoal Heather XS-3XL)

### Decoration Options



### Technical Features



### Polygiene® Freshness Technology

Prevents the growth of odor causing bacteria. Wear more, wash less.

### STORMTECH H2X-DRY® Moisture Management

Allows perspiration to escape from the body, helping to maintain optimal body temperature and comfort



H2XDRY  
ACTIVE MOISTURE  
MANAGEMENT



M's: Charcoal Heather  
(Available in W's)

W's: Ash Heather  
(Available in M's)



M's & W's:  
Granite Heather

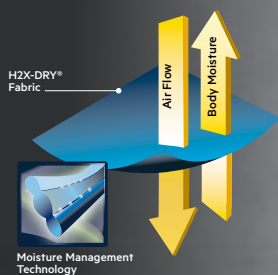




# Performance Layering

It's fair to say that spirited feelings are an unavoidable side effect of being surrounded by clear lakes and majestic snowcapped peaks. STORMTECH has drawn inspiration from those feelings and created tactile equivalents by using only the finest soft, synthetic materials and cotton in the manufacturing of all our layering styles. Our collection consists of an array of base and mid layers that are lightweight, functional and perfect for a warm layer or light sweater. So layer up and feel the joy.

**H2X DRY**  
MOISTURE MANAGEMENT



# Treeline

## Comfort Without Compromise

TREELINE PERFORMANCE 1/4 ZIP PULLOVER HTZ-2

### 1/4 Zip Front

Adjust to regulate your core temperature

### STORMTECH H2X-DRY® Moisture Management

Allows perspiration to escape from the body, helping to maintain optimal body temperature and comfort

### Articulated Action Shoulders

Ergonomic design that enhances a free range of movement

### Contour Side Panels

Provide a flattering and comfortable fit

### Flatlock Seams

Provides chafe-free comfort during any activity



**H2XDRY**  
MOISTURE MANAGEMENT



# Treeline

## Comfort Without Compromise

### TREELINE PERFORMANCE JACKET

HTZ-3W

Streamlined silhouette base layer with H2X-DRY® moisture management technology and GRS-Certified Polyester and Spandex that wicks moisture away from the skin. The Treeline Performance Jacket features a brushed-back fleece which offers superior thermal properties while allowing for excellent breathability. A low-profile chin saver provides extra next-to-skin comfort.



#### Contoured Side Panels

Provide a flattering and comfortable fit

#### Articulated Action Shoulders and Elbows

Ergonomic design detail promotes optimal range of movement

#### H2XDRY MOISTURE MANAGEMENT

Allows perspiration to escape from the body, helping to maintain optimal body temperature and comfort

#### Concealed Zippered Hand Pockets with Brushed Tricot

On seam invisible zipper for a sleek look





## TREELINE PERFORMANCE JACKET

HTZ-3 | HTZ-3W

### Additional Features

- Concealed Zippered Hand Pockets with Brushed Tricot
- Articulated Action Shoulders and Elbows
- Contoured Side Panels
- Thumb Holes

### Fabrication

44% Recycled Polyester/44% Polyester/12% Spandex

### Weight

Heavy-Weight - 7.96 oz/yd<sup>2</sup> / 270gsm

### Men's Sizes

S-3XL (Black, Black Heather, Granite Heather S-5XL)

### Women's Sizes

XS-2XL (Black, Black Heather, Granite Heather XS-3XL)

### Decoration Options



### Technical Features



**STORMTECH H2X-DRY® Moisture Management**  
Allows perspiration to escape from the body, helping to maintain optimal body temperature and comfort

**Low-Profile Chin Saver**  
Provides extra next to skin and wind protection



M's: Classic Blue Heather  
(Available in W's)

W's: Dark Sage Green Heather  
(Available in M's)



M's & W's: Black

M's & W's: Black Heather

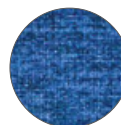
M's & W's: Dark Navy Heather

M's & W's: Bright Red

M's & W's: Granite Heather

M's: Rust Heather

W's: Ice Blue Heather



**Ultra-soft, brushed back polyester fleece with active stretch**

## TREELINE PERFORMANCE 1/4 ZIP PULLOVER

HTZ-2 | HTZ-2W

### Additional Features

- Articulated Action Shoulders
- Contour Side Panels
- Flatlock Seams
- Chin Saver

### Fabrication

44% Recycled Polyester/44% Polyester/12% Spandex

### Weight

Heavy-Weight - 7.96 oz/yd<sup>2</sup> / 270gsm

### Men's Sizes

S-3XL (Black, Black Heather S-5XL)

### Women's Sizes

XS-2XL (Black XS-3XL)

### Decoration Options



### Technical Features



**STORMTECH H2X-DRY® Moisture Management**  
Allows perspiration to escape from the body, helping to maintain optimal body temperature and comfort

**1/4 Zip Front**  
Adjust to regulate your core temperature



M's: Rust Heather

W's: Dark Navy Heather  
(Available in M's)



M's & W's: Black

M's & W's: Black Heather

M's & W's: Sage Green Heather

W's: Ice Blue Heather

# Mesa

## Comfort Without Compromise

### MESA 1/4 ZIP PULLOVER

FPR-1W

Sleek silhouette base layer with H2X-DRY® moisture management technology and 100% GRS-Certified Polyester that wicks moisture away from the skin. The Mesa 1/4 Zip Pullover features an Ottoman textured knit, which offers light thermal properties, breathability, and a free range of movement. Flatlock seams and chin saver provide chafe-free comfort.



#### Flatlock Seams

Provides chafe-free comfort during any activity

#### 1/4 Zip Front

Adjust to regulate your core temperature

#### H2XDRY

MOISTURE MANAGEMENT

Allows perspiration to escape from the body, helping to maintain optimal body temperature and comfort

#### UVX

SUN PROTECTION

#### UPF Rating 50+

Protects the skin from the sun's rays

## MESA 1/4 ZIP PULLOVER

FPR-1M | FPR-1W

### Additional Features

- Contour Side Panels
- Low-Profile Chin Saver
- Articulated Action Shoulders

### Fabrication

100% Recycled Polyester Double Texture

### Weight

Mid-Weight - 6.93 oz/yd<sup>2</sup> / 235gsm

### Men's Sizes

S-5XL

### Women's Sizes

XS-3XL

### Decoration Options



### Technical Features



**STORMTECH H2X-DRY® Moisture Management**  
Allows perspiration to escape from the body, helping to maintain optimal body temperature and comfort

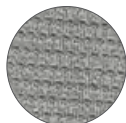
**UPF Rating 50+**  
Protects the skin from the sun's rays

**Flatlock Seams**  
Provides chafe-free comfort during any activity

**1/4 Zip Front**  
Adjust to regulate your core temperature



M's & W's: Navy



**Ottoman textured performance knit fabric with active stretch**



M's: Black  
(Available in W's)



W's: Storm Grey  
(Available in M's)

## BASE THERMAL 1/4 ZIP

HTZ-1 | HTZ-1W

### Additional Features

- Contrast Cover Stitching
- Contour Side Panel

### Fabrication

95% Polyester/5% Spandex Drop Needle Double Knit Fleece

### Weight

Mid-Weight - 7.086 oz/yd<sup>2</sup> / 240gsm

### Men's Sizes

S-3XL (Dolphin S-6XL)

### Women's Sizes

XS-2XL (Dolphin XS-3XL)

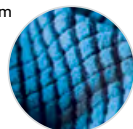
### Decoration Options



### Technical Features



**STORMTECH H2X-DRY® Moisture Management**  
Allows perspiration to escape from the body, helping to maintain optimal body temperature and comfort



**Grid Back Fleece**  
Offers superior thermal properties while allowing for excellent air flow and breathability

**Reverse Coil Front 1/4 Zipper**  
Adjust to shut out the cold or allow heat to escape



M's & W's: Dolphin



M's: Ocean  
(Available in W's)



W's: Earth  
(Available in M's)



# Sonora

---

## Premium Cotton Comfort



### Sonora 1/4 Zip Pullover

FPL-3M | FPL-3W

The Sonora H2X-DRY® 1/4 Zip Pullover combines maximum performance with high-style design. Artfully crafted features with a self-fabric collar and a double-welted 1/4 zip opening take looking great to new heights. Made from responsibly produced Certified Cotton for superior softness and GRS-Certified Polyester and 3% Spandex Pique to help maintain shape and transport moisture away from the skin. UPF rating of 50+ protects the skin from the sun's rays.

# SONORA 1/4 ZIP PULLOVER

FPL-3M | FPL-3W



**1/4 Zip with Double Welt**  
Adjust to shut out the cold or allow heat to escape

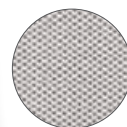
**STORMTECH H2X-DRY® Moisture Management**  
Allows perspiration to escape from the body, helping to maintain optimal body temperature and comfort

**UPF Rating 50+**  
Protects the skin from the sun's rays

**Self Fabric Knit Cuff**  
Provides enhanced durability and comfort

**Semi-Auto Locking Zipper**  
Engineered to lock in position during activity

**Contoured Seaming (W's)**  
Provides a closer to body fit and sleek silhouette



**Snag Resistant Fabric**  
Improves the snag resistance of the fabric, and leaves the garment looking new wear after wear

**4-Way Stretch Fabric**  
Provides extra comfort and an unrestricted range of movement



RECYCLED CONTENT



RESPONSIBLY PRODUCED COTTON



ACTIVE STRETCH



ANTI-SNAG

**Fabrication** 51% Cotton/ 46% Recycled Polyester/ 3% Spandex Pique

**Weight** Mid-Weight – 6.19 oz/yd<sup>2</sup> / 210gsm

**Technical Features**

**H2XDRY**  
MOISTURE MANAGEMENT

**UVX**  
SUN PROTECTION

**Men's Sizes** S-3XL (Black S-5XL)

**Women's Sizes** XS-2XL (Black XS-3XL)

**Decoration Options**



M's & W's: Black



M's & W's: Navy



M's & W's: Ash

# Milano

## Refined All-Day Comfort

### MILANO CREW NECK L/S

HXR-2W

A lightweight stretch layering essential that delivers comfort and warmth on cold days. Classically styled, the Milano Crew Neck Long Sleeve is a versatile adventurer that is as content on the city streets as it is on a mountain top. Made from 46% GRS-Certified Polyester with 9% Spandex and articulated shoulders for an unrestricted range of movement.



#### Flatlock Seams

Provides chafe-free comfort during any activity

#### Articulated Action Shoulders and Elbows

Ergonomic design detail promotes optimal range of movement

#### H2X DRY MOISTURE MANAGEMENT

Allows perspiration to escape from the body, helping to maintain optimal body temperature and comfort

#### UVX SUN PROTECTION

#### UPF Rating 50+

Protects the skin from the sun's rays





## MILANO CREW NECK L/S

HXR-2 | HXR-2W

### Additional Features

- 4-Way Stretch Fabric
- Self-Fabric Crew Neck Collar
- Articulated Action Shoulder
- Contour Side Panels

### Fabrication

46% Recycled Polyester/45% Regular Polyester/ 9% Spandex

### Weight

Mid-Weight - 6.55 oz/yd<sup>2</sup> / 222gsm

### Men's Sizes

S-3XL (Black S-5XL)

### Women's Sizes

XS-2XL (Black XS-3XL)

### Decoration Options



### Technical Features



RECYCLED CONTENT



ACTIVE STRETCH

UPF Rating 50+  
Protects the skin from the sun's rays



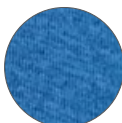
M's & W's: Black



M's & W's: Charcoal Heather



M's & W's: Sage Green Heather



Ultra-soft, active stretch fabric for extra comfort and unrestricted movement

**Flatlock Seams**  
Provides chafe-free comfort during any activity



M's: Rust Heather



W's: Classic Blue Heather  
(Available in M's)

**STORMTECH H2X-DRY® Moisture Management**  
Allows perspiration to escape from the body, helping to maintain optimal body temperature and comfort



## MILANO 1/4 ZIP PULLOVER

HXR-1 | HXR-1W

### Additional Features

- 4-Way Stretch Fabric
- Flatlock Seams
- Low-Profile Chin Saver
- Articulated Action Shoulder
- Contour Side Panels

### Fabrication

46% Recycled Polyester/45% Regular Polyester/ 9% Spandex

### Weight

Mid-Weight - 6.55 oz/yd<sup>2</sup> / 222gsm

### Men's Sizes

S-3XL (Black S-6XL) (Charcoal Heather S-5XL)

### Women's Sizes

XS-2XL (Charcoal Heather, Black XS-3XL)

### Decoration Options



### Technical Features



RECYCLED CONTENT



ACTIVE STRETCH

**1/4 Zip Front**  
Adjust to shut out the cold or allow heat to escape



M's: Classic Blue Heather  
(Available in W's)



W's: Sage Green Heather  
(Available in M's)

**STORMTECH H2X-DRY® Moisture Management**  
Allows perspiration to escape from the body, helping to maintain optimal body temperature and comfort



**UPF Rating 50+**  
Protects the skin from the sun's rays



M's & W's: Black



M's & W's: Charcoal Heather



M's: Rust Heather



W's: Ice Blue Heather

# Volante

---

## Refined All-Day Comfort



### Volante H2X-DRY® 1/4 Zip Pullover

FPL-2M | FPL-2W

The Volante H2X-DRY® 1/4 Zip Pullover features an ultra-soft touch 5-ounce single jersey fabric made with equal blend of GRS-Certified Polyester and polyester with spandex for added stretch and recovery.

H2X-DRY® moisture management technology draws moisture away from the skin, helping you to maintain optimal body comfort. Self-fabric collar for maximum comfort. UPF Rating of 40+ protects the skin from the sun's rays.

# VOLANTE H2X-DRY® 1/4 ZIP PULLOVER

FPL-2M | FPL-2W



**Low-Profile Chin Saver**  
Provides extra next to skin and wind protection

**1/4 Zip Front**  
Adjust to shut out the cold or allow heat to escape

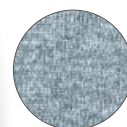
**STORMTECH H2X-DRY® Moisture Management**  
Allows perspiration to escape from the body, helping to maintain optimal body temperature and comfort

**Polygiene® Freshness Technology**  
Prevents the growth of odor causing bacteria. Wear more, wash less.

**Semi-Auto Locking Zipper**  
Engineered to lock in position during activity

**UPF Rating 40+**  
Protects the skin from the sun's rays

**Contoured Seaming (W's)**  
Provides a closer to body fit and sleek silhouette



**Snag Resistant Fabric**  
Improves the snag resistance of the fabric and leaves the garment looking new wear after wear



RECYCLED  
CONTENT



ACTIVE  
STRETCH



ANTI-SNAG

## Additional Features

- 4-way Stretch Fabric

## Fabrication

47% Recycled Polyester/47% Polyester/  
6% Single Jersey

## Weight

Lightweight - 5.01 oz/yd<sup>2</sup> / 170gsm

## Technical Features



POLYGIENE®  
FRESHNESS

## Men's Sizes

S-3XL (Charcoal Heather S-5XL)

## Women's Sizes

XS-2XL (Charcoal Heather XS-3XL)

## Decoration Options



M's & W's: Charcoal Heather



M's & W's: Midnight Heather



M's & W's: Retro Blue Heather



M's & W's: Granite Heather



## **AUGUSTA 1/4 ZIP LONG SLEEVE**

QT-1 | QT-1W

Base layer solution with H2X-DRY® moisture management technology that wicks moisture away from the skin and helps regulate optimum body comfort during high exertion activities. The perfect thermal base layer for a multi-layer system.



## **DOCKYARD 1/4 ZIP PULLOVER**

VQX-1 | VQX-1W

High efficiency base layer features H2X-DRY® fabric treated with Polygiene® Freshness technology to control odor; wear more, wash less. Fabricated to wick moisture away from the skin, helping regulate optimum body comfort during high exertion activities. This 1/4-zip pullover is the perfect base layer for a multi-layer system and offers a UPF Rating 50+ to protect the skin from the sun's rays.

## AUGUSTA 1/4 ZIP LONG SLEEVE

QT-1 | QT-1W

### Additional Features

- Contour Side Panels
- Coverstitching Detail

### Fabrication

92% Polyester/ 8% Spandex

### Weight

Mid-Weight - 6.19 oz/yd<sup>2</sup> / 210gsm

### Men's Sizes

S-5XL (Black S-6XL)

### Women's Sizes

XS-3XL

### Decoration Options



### Technical Features



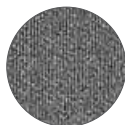
**STORMTECH H2X-DRY® Moisture Management**  
Allows perspiration to escape from the body, helping to maintain optimal body temperature and comfort

**Combination Action Shoulders**  
Ergonomic design for free range of movement

**Reverse Coil Front 1/4 Zipper**  
For clean styling and adjustability



M's & W's: Black



**Ultra-soft, active stretch fabric for extra comfort and unrestricted movement**



W's: Navy  
(Available in M's)

M's: Graphite  
(Available in W's)

## DOCKYARD 1/4 ZIP PULLOVER

VQX-1 | VQX-1W

### Additional Features

- Single Chest Pocket (M's)
- Contoured Seaming (W's)
- Double Needle Topstitching
- Dropped Back with Hem Side Slits

### Fabrication

100% Polyester Double Pique

### Weight

Lightweight - 5.13 oz/yd<sup>2</sup> / 174gsm

### Men's Sizes

S-5XL

### Women's Sizes

XS-2XL

### Decoration Options



### Technical Features



**POLYGIENE**  
FRESHNESS



**STORMTECH H2X-DRY® Moisture Management**  
Allows perspiration to escape from the body, helping to maintain optimal body temperature and comfort

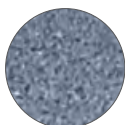
**1/4 Zip with Chin Saver**  
Adjust to shut out the cold or allow heat to escape



**UPF Rating 50+**  
Protects the skin from the sun's rays



M's & W's: Black



**Polygiene® Freshness Technology**  
Prevents the growth of odor causing bacteria. Wear more, wash less.



W's: Navy Heather  
(Available in M's)

M's: Dolphin Heather  
(Available in W's)

# Sizing Charts

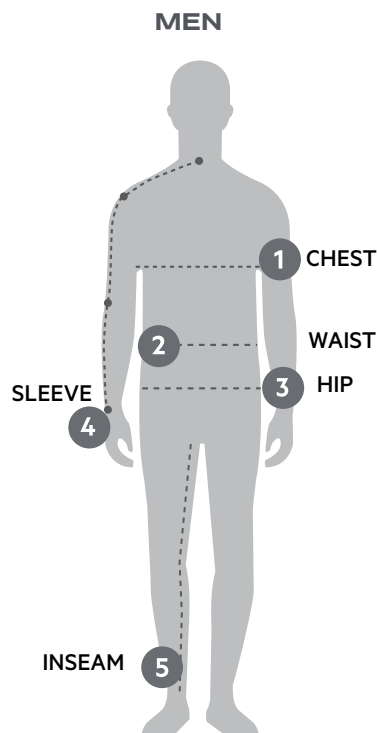
## BODY MEASUREMENTS (MEN'S)

### STORMTECH SIZE CHARTS

Men's size chart is based on body measurements.

Follow these four steps for the perfect fit:

1. **Chest/Bust** – Measure total circumference of your chest at the fullest part at the underarm.
2. **Waist** – Measure total circumference at the narrowest point around waistline.
3. **Hip** – Measure total circumference at the widest part of your body below the waistline.
4. **Sleeve Length** – With your elbow slightly bent, measure from the base of the neck, across your shoulder, to elbow and finish at wrist bone.
5. **Inseam** – Take distance from the top of your inner thigh to the bottom of your ankle.



SIZE		XS	S	M	L	XL	2XL	3XL	4XL	5XL	6XL
CHEST	Imperial Metric	32-35 81-89	35-38 89-96.5	38-41 96.5-104	41-44 104-112	44-47 112-119.5	47-50 119.5-127	50-53 127-134.5	53-56 134.5-142	56-59 142-150	59-64 150-163
WAIST	Imperial Metric	26-29 66-73.5	29-32 73.5-81	32-34.5 81-87.5	34.5-38.5 87.5-98	38.5-42.5 98-108	42.5-46.5 108-118	46.5-50.5 118-128	50.5-54.5 128-138.5	54.5-58.5 138.5-148.5	58.5-62.5 148.5-159
HIPS	Imperial Metric	31-34 79-86	34-37 86-94	37-40 94-101.5	40-43 101.5-109	43-45 109-114	45-47.5 114-120.5	47.5-50 120.5-127	50-52.5 127-133	52.5-55 133-140	55-57.5 140-146
SLEEVE LENGTH	Imperial Metric	32-33 81.5-84	33-35 84-90	33.5-35.5 85-90	34.5-36.5 87.5-93	35.5-37.5 90-95.5	36-38 91.5-96.5	36.5-38.5 93-98	36.75-38.75 93.5-98.5	37-39 94-99	37-39 94-99
INSEAM	Imperial Metric	30.5 77.5	31.5 80	31.5 80	32.5 82.5	32.5 82.5	33 84	33 84	33 84	33 84	33 84



## BODY MEASUREMENTS (WOMEN'S)

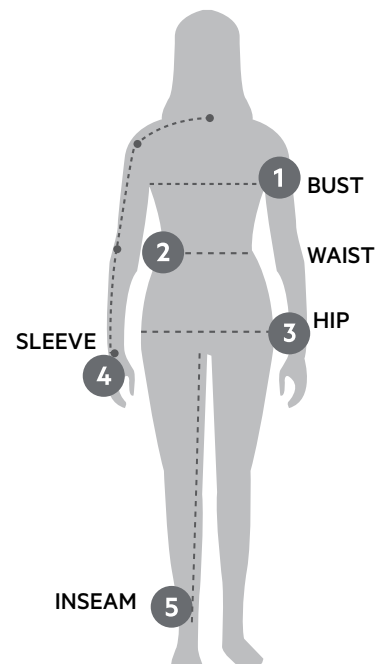
### STORMTECH SIZE CHARTS

Women's size chart is based on body measurements.

Follow these four steps for the perfect fit:

1. **Chest/Bust** – Measure total circumference of your chest at the fullest part at the underarm.
2. **Waist** – Measure total circumference at the narrowest point around waistline.
3. **Hip** – Measure total circumference at the widest part of your body below the waistline.
4. **Sleeve Length** – With your elbow slightly bent, measure from the base of the neck, across your shoulder, to elbow and finish at wrist bone.
5. **Inseam** – Take distance from the top of your inner thigh to the bottom of your ankle.

### WOMEN



SIZE		XS	S	M	L	XL	2XL	3XL
CHEST	Imperial	31.5-33.5	33.5-35.5	35.5-38	38-41	41-44.5	44.5-48.5	48.5-52.5
	Metric	80-85	85-90	90-96.5	96.5-104	104-113	113-123	123-133.5
WAIST	Imperial	24.5-26.5	26.5-28.5	28.5-31	31-34	34-37.5	37.5-41.5	41.5-45.5
	Metric	62.5-67.5	67.5-72.5	72.5-79	79-86.5	86.5-95.5	95.5-105.5	105.5-115.5
HIPS	Imperial	34-36	36-38	38-40.5	40.5-43.5	43.5-47	47-51	51-55
	Metric	86.5-91.5	91.5-96.5	96.5-103	103-110.5	110.5-119.5	119.5-129.5	129.5-140
SLEEVE LENGTH	Imperial	30-30.5	31-31.5	32-32.5	33-33.5	33.5-34	34-34.5	34-34.5
	Metric	76.5-77.5	79-80	81.5-82.5	84-85	85-86.5	86.5-87.5	86.5-87.5
INSEAM	Imperial	30	31	32	32	32	32	32
	Metric	76	79	81	81	81	81	81



**STORMTECH®**

nurtured by nature

[WWW.STORMTECHPERFORMANCE.COM](http://WWW.STORMTECHPERFORMANCE.COM)

 @stormtech1977  @stormtechcorporate

