



## The Men's Denim Shirt

Medium Fit

S > 3XL

235 GSM

### Details

- Button down collar with single needle topstiches
- Collar stand
- Front placket single needle topstiches on each side
- Forwarded shoulder
- Back yoke
- Inside yoke in self fabric
- Set-in sleeves
- Sleeve placket with one button
- Cuff with two buttons
- Rounded cuff corners
- Double pleats at cuff seam
- Faded look on all seams due to garment washing
- Indigo yarn dyed product, each garment may vary in appearance, colour may bleed, follow our care label
- Read carefully print recommendations

### Composition

Shell - Woven denim  
 100% Cotton - Organic Ring Spun Combed - 235 GSM  
 Garment washed

### Care

Wash similar colours together, no ironing on print, wash and iron inside out.



### Country of origin

Weaving : Bangladesh  
 Dyeing : Bangladesh  
 Assembly : Bangladesh



Colors

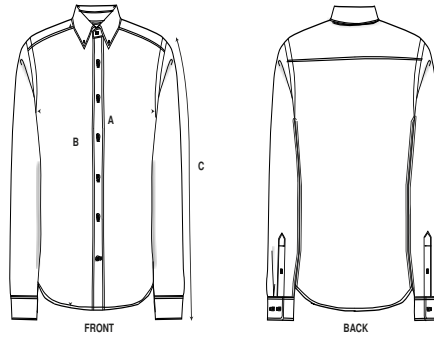


Mid Wash  
C371



Light Wash  
C370

Size Guide



Sizes		S	M	L	XL	XXL	3XL
A	Half Chest	53.5	56	60	64	68	72
B	Body Length	73.8	75	77	79	81	83
C	Sleeve Length	66	66.5	67.5	68.5	69.5	70.5

Packing

Sizes		S	M	L	XL	XXL	3XL
	Pieces/bag	1	1	1	1	1	1
	Pieces/box	25	25	25	25	25	15