



The Women's Denim Shirt

Medium Fit

XS > XXL

235 GSM

Details

- Point collar with single needle topstiches
- Collar stand with one contrast button
- Front placket with single needle topstiches on each side
- Forwarded shoulder
- Back yoke
- Inside yoke in self fabric
- Set-in sleeves
- Sleeve placket with one button
- Cuff with two buttons
- Straight cuff corners
- Double pleats at cuff seam
- Faded look on all seams due to garment washing
- Indigo yarn dyed product, each garment may vary in appearance, colour may bleed, follow our care label
- Read carefully print recommendations

Composition

Shell - Woven denim
 100% Cotton - Organic Ring Spun Combed - 235 GSM
 Garment dyed

Care

Wash similar colours together, no ironing on print, wash and iron inside out.



Country of origin

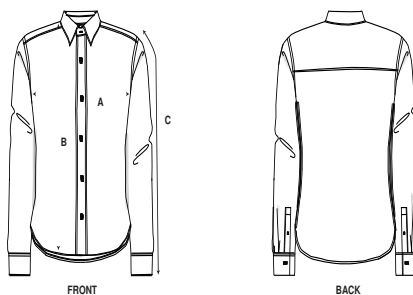
Weaving : Bangladesh
 Dyeing : Bangladesh
 Assembly : Bangladesh



Colors



Size Guide



| Sizes | | XS | S | M | L | XL | XXL |
|-------|---------------|------|------|------|------|------|------|
| A | Half Chest | 47 | 50 | 53 | 56 | 59 | 62 |
| B | Body Length | 64.8 | 66.5 | 68.5 | 70.5 | 72.5 | 74.5 |
| C | Sleeve Length | 58.5 | 59 | 60 | 61 | 62 | 63 |

Packing

| Sizes | | XS | S | M | L | XL | XXL |
|-------|------------|----|----|----|----|----|-----|
| | Pieces/bag | 1 | 1 | 1 | 1 | 1 | 1 |
| | Pieces/box | 25 | 25 | 25 | 25 | 25 | 25 |