



## The Women's Oxford Shirt

Medium Fit

XS > XXL

190 GSM

### Details

- Point collar with single needle topstiches
- Collar stand
- Front placket with single needle topstiches on each side
- Forwarded shoulder
- Back yoke with box pleat
- Inside yoke in self fabric
- Set-in sleeves
- Sleeve placket with one button
- Sleeve cuff with two buttons
- Rounded cuff corners
- Double pleats at cuff seam

### Composition

Shell - Oxford  
100% Cotton - Organic Ring Spun Combed - 190 GSM  
Garment washed

### Care

Wash similar colours together, no ironing on print, wash and iron inside out.



### Country of origin

Weaving : Bangladesh  
Dyeing : Bangladesh  
Assembly : Bangladesh



**Whites**



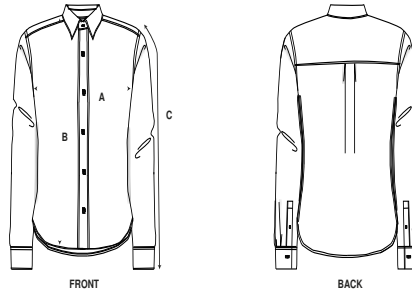
**Colors**



**Shirt Fabric**



**Size Guide**



Sizes		XS	S	M	L	XL	XXL
A	Half Chest	47	50	53	56	59	62
B	Body Length	64.8	66.5	68.5	70.5	72.5	74.5
C	Sleeve Length	58.5	59	60	61	62	63

**Packing**

Sizes		XS	S	M	L	XL	XXL
	Pieces/bag	1	1	1	1	1	1
	Pieces/box	25	25	25	25	25	25